

# WHITSTABLE CARNIVAL

## SATURDAY 2 AUGUST



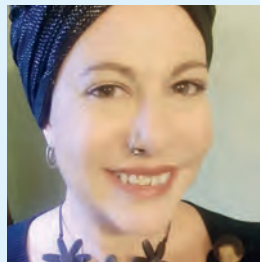
# PETER CUSHING

## AND HIS MOVIES

SOUVENIR PROGRAMME 2025



# A word from our Chair...



**AURELIA DE ROCHA**

## Welcome to our 128th Carnival!

That's 128 years of joy, colour, and community spirit. How amazing!

And here's the honest truth: unless we raise funds, we won't make it to 130 years.

It costs around £8,000 to put on the carnival each year. We don't have corporate backers or magic funding. Just us, a bunch of hard-working volunteers doing it all for love. We don't get paid but we do have community pride and the belief that this tradition matters.

We've got new volunteers this year who've been incredible, but we need more hands on deck. And we need you.... yes, you holding this programme... to help us keep going.

Even £2 makes a difference. There's a QR code below that links directly to our Give A Little page. Please, scan it. Give what you can. Think of it as buying a ticket to keep the carnival alive for the next generation. Off The Wall Club is managing these donations for Whitstable Carnival.

Please don't leave it to someone else. This is your carnival. If everyone reading this gave just £2, it would go towards the costs of the day.

And let's not forget Sam the Giant, our beloved carnival guardian. He lost a finger last year (yes, really), and he's in dire need of repairs. He's a part of this carnival's story and I hope you feel that he deserves saving.

We have a brand new website now, where you can learn more, donate, or sign up to help.

We're doing a shout out here as we really need a Secretary and a website person. The secretary coordinates with the Chair and minutes the meetings. For the website, ideally we'd like someone with WordPress experience that is familiar with both Block and Classic editing, good graphic skills and can manage cpanel.  
[whitstablecarnival.co.uk](http://whitstablecarnival.co.uk)

Help us reach 130 years—with joy, with community, and with all ten of Sam's fingers.

**And don't forget to bring cash with you: coins and notes appreciated. All cash will go to our participating charities. Let's see how much we can get into the buckets this year!**

With heartfelt thanks, *Aurelia de Rocha* Chair of the Carnival Committee

**Can you donate a little to help the Carnival?**

Please scan the QR for details

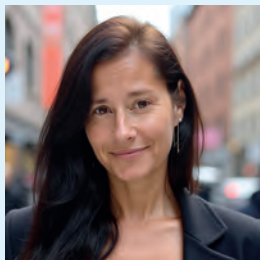


**Volunteers needed to help the Carnival**

Please scan the QR for details



## Whitstable Carnival Association Committee



**LESINDA LEIGHTLEY**

I joined carnival because I love community, and tradition. Every person here I've met has just been amazing, and if I can work with them, for them, it's an absolute win.



**BELINDA MURRAY**

### Events

A long time Carnival supporter and ex-Chairperson now helping with creative workshops and a general stalwart of the committee

# Whitstable Carnival Association Committee



**RICK WEST**  
**Vice Chairperson**  
– Events

Rick has been tasked with putting on the benefit gigs and is the man inside Sam the Giant



**MANDY HANSCOMBE HARDY**

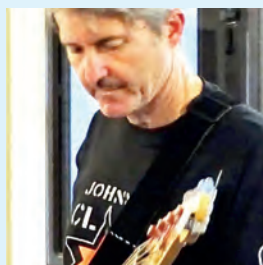
Moved to the town a couple of years ago, Mandy worked with Capt Sam's giant family near Ashford!



**COLIN GOTTS**  
**Media/IT**  
Photographer/Filmmaker and proud supporter of the carnival



**GARY HUNTER**  
Employed in the tourism industry for many years, in 2000 he joined one of Kent's major tourist attractions.

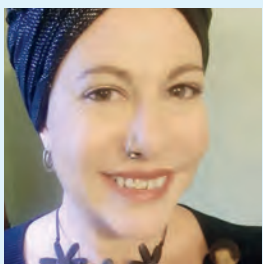


**PAUL ROOKE**  
**Treasurer**  
Recently retired and excited to be associated with my 4th Whitstable Carnival.



**CINDY BRYANT**  
**Committee Member**  
– Fund Raising

Cindy moved to Whitstable in 2021 to settle by the sea. She has thrown her energy into raising funds



**AURELIA DE ROCHA**  
**Chair**  
Aurelia is a professional Therapist who loves to take minutes in her spare time



**JOANNA HINSON**  
**Committee Member,**

Now living in Whitstable, Joanna has worked in education for over 30 years. Joanna paints and creates art



**RODGER FINCHAM**

Designer and Maintenance Architect. Excited to be part of this year's Carnival



**TANYA GIBSON**  
**Committee Member**

Have loved Whitstable & its communities for many years so happy to help in putting back.



# *Carnival events around the town*

1. **Whitstable Social Club**, till late.  
Live music 7-9 from 'Just For Fun'.  
Free admission. All welcome.
2. **The Coach and Horses**. Six hours  
of DJs and bands outside the  
library. After party in the evening.  
All proceeds to the carnival.
3. **Tea & Times**. 'Caribbean food and  
drink and a good old hip-swing',  
according to Veronica. Ask behind  
the counter for details.

## Vinko Wine Shop & Bar



250 + wines  
Drink In  
Take Away  
Ever changing  
Wine by the Glass  
Selection

### 15 Harbour Street Whitstable

Open Wednesday to  
Monday From 2pm  
@vinkowine  
Vinkowine@hotmail.com



*...to take away*

207 Tankerton Rd  
Whitstable  
CT5 2AT  
01227 772481



*...to eat in*

205 Tankerton Rd  
Whitstable  
CT5 2AT  
01227 266600

# *On the day...*

**The 128th anniversary CARNIVAL takes place on Saturday 2nd August 2025. Assemble along Pier Avenue and Northwood Road from 3-3.30pm.**

HQ for the day will be at 15 Pier Avenue, in a gazebo in the garden.

**LATE ENTRIES** are accepted on the day till 4.00pm, but it will help to register early with the entry form in the program or on the website: <https://whitstablecarnival.co.uk>. Sign in at HQ and then find your place in the procession.

**JUDGING** starts at 4.15 prompt. All entries must be in position by 4.00.

**CARNIVAL ENTRIES:** please approach along Northwood Road from its junction with Tower Parade/Tankerton Road (where the laundrette is).

**COLLECTING TINS** and collecting buckets will be available from HQ.

**THE PROCESSION** starts at 5.30, passing Tankerton Circus at 5.40, Tower Parade 5.50, the Duke of Cumberland 6.10 and the East Kent at 6.30. These times are approximate. You should be at your vantage point early to get a good view. Please don't let children run into the road as the procession passes.

**PLEASE DO NOT THROW COINS** as this has been known to damage property and is one of the reasons carnival has been less well attended in recent years. If you would like to make a donation, please put your coins in the collecting tins as they pass. All money received will go to our participating charities.

## *The Carnival Committee Officers:*

**Aurelia De Rocha** – Chair,

**Rick West** – Vice-Chair • **Chris Stone** – Secretary

**Paul Rooke** – Treasurer

## *Your Carnival Souvenir Programme*

Pictures and program content has been compiled and edited by Chris Stone, Paul Rooke and Jon Flaig with help from the committee. Special thanks to Joanna Hinson, Helen Ixer, Amanda Hanscombe Hardy, Sarah Hinchliffe, Aurelia De Rocha, Rick West and Peter Banbury for the material, and to Gerry Atkinson and Andrew Hastings for the photos.

© Whitstable Carnival Association 2025

# OUR THEME THIS YEAR

by Amanda Hanscombe Hardy & Aurelia De Rocha

WHITSTABLE CARNIVAL has a different theme each year, and this year we have decided to honour the life and times of Whitstable legend Peter Cushing, and hope everyone will enjoy dressing up as characters from his films.

Peter Cushing was a talented actor and well known local to our coastal town once he joined our community in 1959.

His acting career began in 1939 playing small film roles, many uncredited. He took to the stage on more than one occasion, such as in 1947 when he starred in Shakespeare's Hamlet. But by 1956 he was taking the lead roles in movies such as the 'Curse of Frankenstein', and went on to play the part of Van Helsing in 'Dracula' which secured him firmly as a go to actor for the 'Horror' genre of movies at the time. Despite this, his career was still very varied.

In 1959 he was cast on TV as the famous Sherlock Holmes in 'The Hound Of The Baskervilles' and 11 other episodes, and went on to play The Doctor in the 'Doctor Who And The Daleks' film in 1965.

This wasn't his most famous Sci Fi movie. In 1977 he appeared as the evil Grand Moff Tarkin in 'Star Wars', a role that was reprised using AI in later episodes of the franchise, meaning his films credits have continued after his death.

Peter Cushing appeared in more than 100 films, and in 1988 was awarded an OBE for Services to the World of Entertainment.

As well as his acting career, Peter loved painting, creating model soldiers, and swimming. He also enjoyed writing and was the author of two books about his life: 'Past Forgetting, Memoirs of the Hammer Years' and 'Peter Cushing, the Complete Memoirs'.

Peter and his beloved wife Helen lived at Number 3 Seaway Cottages on Island Wall, a property with stunning views and a door to the beach. He married Violet Hélène Beck in 1943 and remained in his Seasalter house after her death in 1971.

Peter was a gentle and polite soul and could often be seen at his window overlooking the beach painting the view, walking the shingle to take a dip in the sea, or strolling and cycling around town. For the final 17 years of his life he was a great frequenter of The Tudor Tea Rooms in Harbour Street where there remains a tribute to him.

Peter Cushing died in 1994. He has been credited as an influence by many actors and film makers, due to his professionalism, charm, and generosity. To Whitstable he remains Peter, a man who loved this little harbour town.

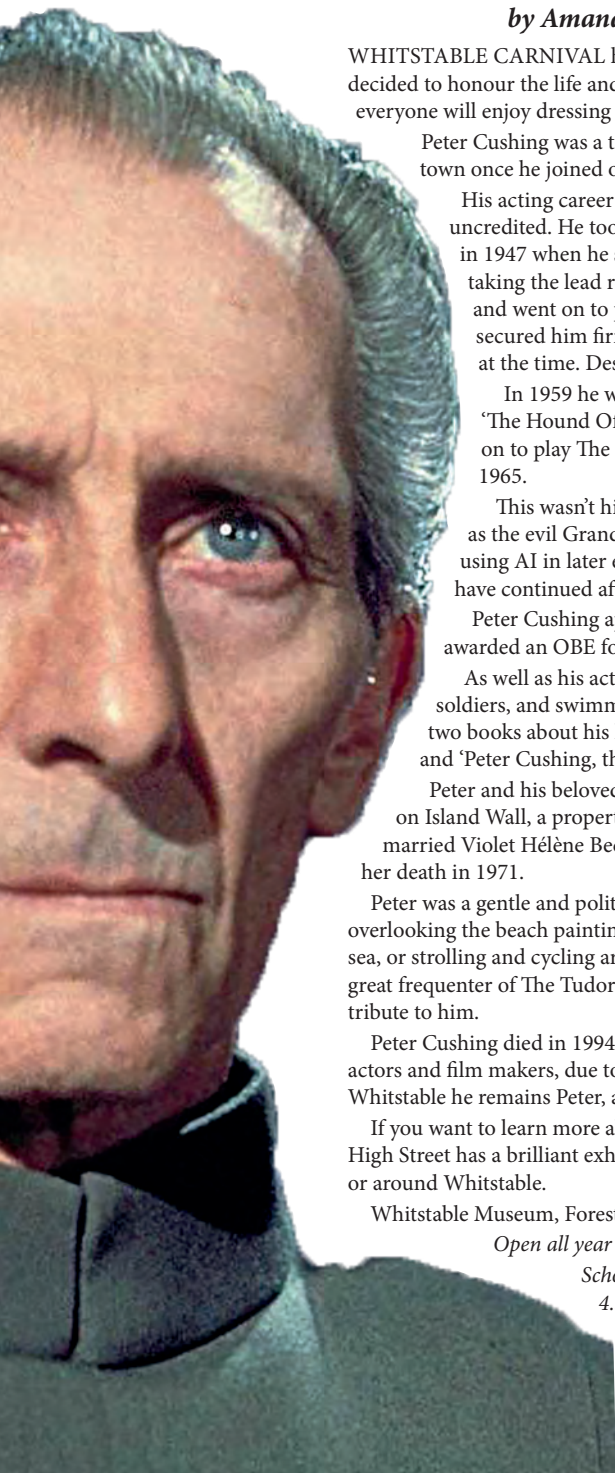
If you want to learn more about Peter Cushing, the Whitstable Museum in the High Street has a brilliant exhibition and you can visit free of charge if you live in or around Whitstable.

Whitstable Museum, Foresters' Hall, 5A Oxford Street, Whitstable, CT5 1DB

Open all year on *Thursday to Saturday* from 10.30am to 4.30pm

*School holidays Wednesday to Saturday 10.30am to 4.30pm*

**Peter Cushing portrayed Grand Moff Wilhuff Tarkin in the original 1977 Star Wars film, A New Hope.**



# CREATIVE TEAM

When the theme of this year's Carnival was up for deliberation, Peter Cushing was the stand out winner, particularly as he lived the latter part of his life in Whitstable.

Such an interesting gentleman, with a long and varied career in theatre, film and TV, spanning decades.

Not to mention his love of drawing and watercolour painting. He was also an ardent vegetarian and a keen ornithologist.

To celebrate his life would be an honour, and no doubt, offer many costume and float opportunities!

The Carnival Creative team plumped for Frankenstein's monster heads and child-sized Dalek costumes, and offered volunteers to help make them in local schools. The ethos of the Carnival is accessibility for all, especially children. It's our main agenda.

Teachers at Swalecliffe Community School responded positively and Miss Amy Smith was keen that all three of her Year 4 classes, a total of 86 children, should continue a tradition of flying the flag for the school, by being involved in the Carnival.

The Carnival Creative Team in their endeavour to be as environmentally responsible as possible, supplied literally hundreds of pieces of recycled waste cardboard, all collected from local businesses. These were then pre-cut to a pattern, ready to be assembled by the children, with brown self adhesive paper tape, which was no mean feat.

Year 4, being very attentive and following instructions enthusiastically, were so adept at assembling that they completed the task in half the expected time... they were eager to get on with painting them!

## DONATION

This year the creative team were able to supply materials such as paint and tape freely, thanks to a donation from the National Education Union.

The children were told the tale of Professor Frankenstein's creature and responded by creating



a 'monster' of their own, personalising it with crazy hairstyles, haphazard stitching and inappropriate eyebrows!

They spent a day and a half completely absorbed in their creations, with a little help from our team and staff members in school. They didn't need much!

We are so excited to see what the rest of their ensemble will be.

Year 4 will appear on August 2nd as a group of little monsters, gleefully laughing behind their scary facades!

**When you see them, please don't run...cheer them on!**



# Poster Design Challenge



They have all been completed by children in year 4 of Swalecliffe school.

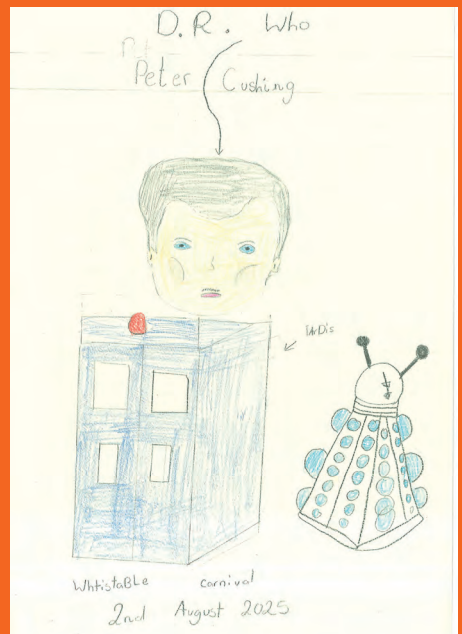
**THE WINNER:**  
**Anya Southgate**



^ Oliver Mayne



^ Hettie Madle Jordan

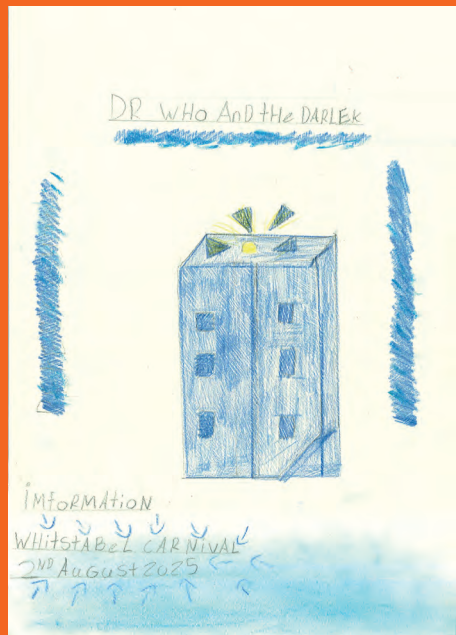


^ Beatrix Young

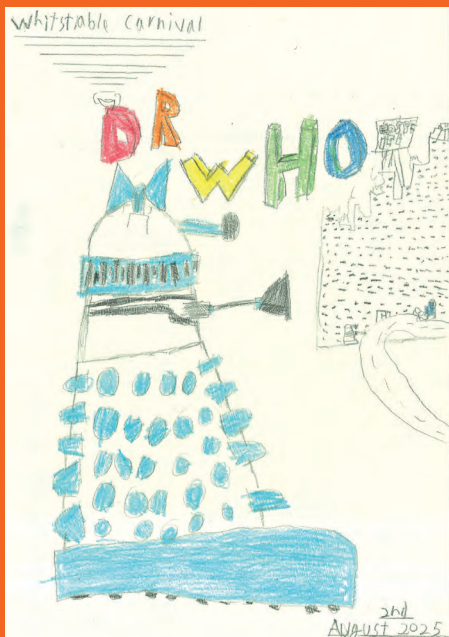




^ Arabella Mann



^ Polly Douglas



^ George Matthes



^ Miriya Mathew

# JANE'S LAST HURRAH!

**MANY people in Whitstable will remember the Carnival Association's former secretary, Jane Bowell, who sadly passed away on the 6<sup>th</sup> November 2024 after a long illness. She was 74 years old.**

Jane was kind-hearted, generous, fun to be with and intelligent. She was a great secretary and was closely involved with all aspects of the 2019 carnival, helping with the risk assessments, sending out letters, keeping minutes and generally maintaining an efficient presence during those chaotic early days when no one quite knew what we were doing. It was Jane who kept the show on the road and who patiently guided the rest of us in the right direction.

## DAUGHTER

She was born Jane Evelyn Fountain of Jean Patricia and Derek Sydney Fountain in Bedford, and her early years were spent commuting between the UK and Nigeria, where Derek was the Chief of Police. Jane spent half of the year in Nigeria, and the other half in the UK. It is this, according to her daughter Charlotte, that explains her unwillingness to travel in later life. She was a home body. She was reluctant ever to leave Whitstable.

She came to the town in the late '70s. She lived in Sydenham Street for a while before, finally, settling down in Reservoir Road, where her second daughter, Rachel, was born. She was a legal secretary, although she took time off to bring up her children.

## DAUGHTER

She had many friends. When she was pregnant with Charlotte she became involved with a bunch of young mothers who all gave birth at around the same time. She called them "the toddlers group" and remained close with them to the end. Charlotte remembers days on the beach and outings with the group, gangs of kids playing together, all having fun.

Jane loved Whitstable, and was a talented and prolific photographer of the town. She loved the harbour and walks on the beach. She kept a record of the changing seasons by photographing Rachel in front of the blossoms in her garden every year.



**JANE Bowell**

Photo by Gerry Atkinson

She was a foundational member of the Whitstable Carnival Association and the secretary from 2018 till 2022. Her record keeping was careful and meticulous and helped provide a much needed anchor to some of the flightier elements on the committee. When writing official correspondence Jane would always end the letter with a "Hurrah!"

## STALWART

Nick Dent, the former chair, had this to say about Jane's time as its secretary:

"Jane was a stalwart of the new management committee which took over the running of Whitstable Carnival from 2018 until her illness meant she was not able to continue her support. She helped us establish the new body. Jane was our backbone.

"She will be remembered fondly and will be a hard act to follow. Thanks Jane for all your help and support and know that the people of Whitstable have benefited from your endeavours."

# Blessing of the Lammass Loaf

LAMMAS is an ancient Anglo-Saxon festival that traditionally takes place on the 1st August. It coincides with another ancient festival originating in the Celtic world, called Lughnasadh.

‘Lughnasadh’ means ‘Assembly of the Sun’, while ‘Lammass’ means ‘Loaf Mass’. Both are harvest festivals meant to mark the grain harvest.

When the new Carnival committee took over in 2018 we decided to commemorate these festivals as part of our carnival celebrations. We commissioned Hubbard’s bakery to bake us a Lammass loaf which was then blessed by the Reverend Simon Tillotson. The loaf was then shared out at the carnival. We have continued this tradition ever since.

Rev Simon is very supportive of our carnival and its ethos. This is what he says:

“In a world where conflict seems to be driving people further apart, it is so important that communities come together. Carnivals are the most fun and effective ways of doing this. The various arts and community groups that make up our society parade their floats, or walk as groups, together through the heart of our town in a spirit of light-hearted, joyful, playful celebration. For me this is a deeply spiritual recognition of the sanctity of all life, regardless of ethnic, religious, and political definition. We are all brought together by carnival. If only our world could more deeply embody the spirit of carnival, what a happier place it would be.”

**This year’s blessing will take place on at 2pm on Friday 1st of August under the Yew Tree at All Saints Church, Church Street, Whitstable. Simon will be accompanied by local artist and Nature Priestess, Hélène Williams and a small congregation. The loaf will be distributed on the parade the following day.**

Please come along and enjoy this moment of celebration as we mark the turning of the year through its seasons.



Photo by Gerry Atkinson



**Hubbard’s, family run bakery since 1992**



# Peter and Helen in Whitstable

Written by Christopher Gullo, the director of the world-wide  
Peter Cushing Association in collaboration with Whitstable Museum.

Helen Cushing was an amazing lady born in St Petersburg and spoke four languages fluently. Helen was a dancer and actress, a Civil Defence member, and directed plays for ENSA in World War II.

In addition to Peter's stage, film and TV career, the book focuses on his creative talents. Fascinating details have been discovered through newspapers, theatre programmes and Whitstable residents' memories.



## Peter and Helen in Whitstable



**Their lives on stage,  
film, television and in  
"the Village"**



Purchase from Whitstable Museum  
Oxford Street  
Whitstable CT5 1DB

£12. UK post & pack £5  
International postage at cost.  
[admin@whitstablemuseum.org](mailto:admin@whitstablemuseum.org)

# A Whitstable Love Story



**PETER CUSHING, and his wife, Helen, had been coming to Whitstable for holidays since the 1940s. He said he preferred holidaying in UK to going abroad.**

They used to stay at Favourite Cottage on Island Wall, which was owned by writer Harry Hurford-Janes, a friend. Peter said of Whitstable, “it is a lovely part of the coast, and extremely healthy.”

In 1958 they purchased 3, Seaway Cottages as a holiday cottage and began using it regularly. This was during the filming of *The Hound of the Baskervilles*, in which Peter starred as Sherlock Holmes. He had a studio in the attic where he would paint and make models as well as designing jewellery. The two of them could often be seen on the beach where Peter loved to swim in the bracing waters.

In 1968 they moved into the cottage permanently. This was due to Helen’s fading health. She had emphysema and found living in London increasingly difficult. She said that the city smelled of stale food and smoke and that she preferred the fresh sea air of the Whitstable coast.

Helen and Peter had first met in 1942 when Peter had secured the leading role in Noel Coward’s *Private Lives*. They both worked for ENSA, the Entertainment National Services Association, entertaining British troops during the war. Helen

described their first meeting in an interview in 1955:

“I saw a man with an old suitcase listed to starboard, a grubby ancient mackintosh and wearing a very old hat. Yes... it was Peter. He swept off the hat and greeted me as if I was royalty and seemed unconscious of his appearance. I thought, this is the strangest individual I’ve ever met – and the most attractive.”

Helen’s mother was the daughter of a Polish baroness and a Swedish army general. Her father was English. She was born in St Petersburg in 1905 but grew up in England. She spoke several languages fluently.

After she met Peter she gave up her own acting career to help further his. It was her proficiency in languages that helped Peter secure a number of his early roles. She tutored him in the proper pronunciations.

## SHRINE

In early January 1971 Helen’s emphysema worsened and she found herself in Canterbury Hospital. Peter immediately cancelled his role in his latest film and came home to nurse her. She passed away on the 14th January 1971 in Seaway Cottages, with her husband by her side.

Peter never really recovered from her death. He built a shrine to her memory in the Cottage they had called home.

He finally passed away on the 11th August 1994, having spent the rest of his life in Whitstable as its most honoured resident.

You can read all about Peter and Helen in Whitstable in the book of the same name, written by Chris Gullo, Director of the Peter Cushing Association, and published by the Whitstable Community Museum and Gallery, available from the museum.

# “Peter Cushing lives in Whitstable,”

## Whitstable Song: Peter Cushing Lives In Whitstable by The Jellybottys.

THE JELLYBOTTYS were a Whitstable band dating from the 80s. They played their first gig at what was then the Labour Club, under the arches on Belmont Road, in 1987. They consisted of Louis Court on bass, Eric Fisher on drums, and Derek (Deek) McNeill on guitar and vocals. Deek also wrote most of the songs.

Whitstable people will know Louis and Eric as two local Shellbacks, born and bred in the town, but Deek hails from Scotland and moved back there many years ago. The Jellybottys, however, continue to exist, as a sort of weird, ghostly internet phenomenon haunting the digital landscape.

Their most famous song is Peter Cushing Lives In Whitstable. It was an instant hit with the audience when it was first played, bringing everybody immediately to the dance floor, and it has continued to tickle people's imagination ever since.

It refers to the time, prior to 1994, when Peter Cushing did actually live in Whitstable. He was a marked presence in the town, unfailingly polite, often seen riding his bike, or going to the shops to buy his groceries, as the song reflects.

Here are the lyrics:

*Peter Cushing lives in Whitstable,  
He goes shopping on his bicycle,  
You can see him buying vegetables,  
Peter Cushing lives in Whitstable  
Wha-ha! What-ha-ha! Wha-ha! Wha-ha-ha!*

The song came about during a jam session in Deek's house. Someone started playing the riff and they all joined in. The first lyrics were, “Captain Scarlet lives in Whitstable,” and the tune does, in fact, bear a passing resemblance to the theme of the TV series. It was Eric who suggested the change. “No, it should be, Peter Cushing lives in Whitstable.” After that they

## SAMPHIRE

A Kentish Bistro. Family-run since 2006. Open for brunch, lunch and dinner 7 days a week.



[samphirewhitstable.co.uk](http://samphirewhitstable.co.uk)

[@samphire\\_whitstable](https://www.instagram.com/samphire_whitstable)



# *He goes shopping on his bicycle" >>*

worked the song up into the inspiring masterpiece we know today.

Well obviously that might have been it, a short lived pop phenomenon of the late 80s, had not Alan Davies, the comedian, mentioned it on the telly. He played his first gig at the Club. He must have been there when the Jellybottys aired their song. Years later, on an episode of QI with Stephen Fry, he mentioned it.

## **"WHAT A GREAT SONG"**

"Peter Cushing lived in Whitstable when I lived in Whitstable. And a local band had a song about him...." he said, followed by an impromptu performance.

Fry was much taken with it. "What a great song," he said. "You see this is the first rule of pop music, write about what you know, what you see out of the window."

QI did their own version, but it was nowhere near as good. Later Deek contacted them with the original, which was showcased on their website. It has had a continual presence on the internet ever since. Deek has also revived a number of other long lost Jellybotty songs, which you can find at: [jellybottys.com](http://jellybottys.com).

*Look out for them on the procession!*



**Dr. Liz McGown   Dr. Louise Whorlow   Dr. Justin Yip**

# **Chiropractors**

GCC registered

BCA members

- Relieve pain and improve function and performance
- Back and neck pain, headaches
- Sport injuries, joint pain and muscle aches
- All ages welcome: children, teenagers, adults and elderly



## **EVOLUTION HEALTH**

The Centre for Wellbeing  
62 Borstal Hill  
Whitstable  
CT5 4NA

**Tel: 01227 273821**  
[www.evolutionhealth.co.uk](http://www.evolutionhealth.co.uk)

# Wild About Whitstable

**Wild about Whitstable is back with a series of nature based events throughout the summer, and into the autumn. There will be walks, talks and workshops in and around the town, including family friendly events. Most are free of charge.**

Our aim is to celebrate the wide variety of habitats in our local area, including coastal, marshes, grassland and woodland and the diverse flora and fauna that surround us. Learn about native species and spot some amazing wildlife!

Events include everything from seashore walks led by local naturalists, to a talk about wildlife centred gardening. See sand under a microscope or come to our to bat and moth evenings at the Castle.

In previous years we have focused our events on one week but this year we are spreading them across the months to make them more accessible to all.

Look out for our children-oriented events in August, including science activities at the Whitstable Museum and craft workshops at the Horsebridge (see relevant websites for more information). There will even be a 'Bioblitz' at Stream Walk Garden!

The highlight will be our Eco Fair at St John's Methodist Church (Argyle Road) on Saturday 16th August (11:00-16:00). Following on from our success last year there will be stalls from a variety of local and national environmental organisations and opportunities to get involved. You can buy gifts and treats from a range of eco-friendly small businesses, or treat yourself at our café with home-made cakes.



We aim to put nature centre stage and highlight the natural wonders on our doorstep.

For a day by day guide of what's on, visit [CT5peoplesforum.org](http://CT5peoplesforum.org) and search for Wild about Whitstable. Numbers are limited at some events so be sure to book early by email: [CT5.eco@outlook.com](mailto:CT5.eco@outlook.com)

Join us this year for a celebration of the outdoors, sustainability, and community!

Wild about Whitstable is run by volunteers and while most events are free of charge, donations are very welcome.

*Part of the CT5 People's Forum*



# Wild about Whitstable

## Summer Events 2025

<b>Date</b>	<b>Time</b>	<b>Event</b>	<b>Location</b>
Tuesday 8 <sup>th</sup> July	19:30	<b>Wildlife Gardening: Myths and Realities with Steve Head and the Whitstable Horticultural Society</b>	United Reformed Church £5 for WHS non members on entry
Sunday 13 <sup>th</sup> July	08:00	<b>Wildlife Walk Andy Taylor</b>	Long Rock, meet at Skate Park
July date tbc		<b>Bat and Moth Evening</b>	Whitstable Castle Gardens Booking essential
Wednesday 6 <sup>th</sup> August	08:30-14:30	<b>Mammals and Birds in the Swale on board SB Greta</b>	Harbour NB Paid event (£54pp); numbers are limited
Sunday 9 <sup>th</sup> August	08:00	<b>Wildlife Walk</b>	Long Rock, meet at Skate Park
11-15 <sup>th</sup> August		<b>Nature crafts for children</b>	The Horsebridge
Saturday 16 <sup>th</sup> August	11:00-16:00	<b>Eco Fair</b>	St John's Church, Argyll Road
18-22 <sup>nd</sup> August All week		<b>Nature activities for children</b>	Whitstable Museum
September date tbc		<b>Bat and Moth Evening</b>	Whitstable Castle Gardens Booking essential
Thursday 11 <sup>th</sup> September	19:00-21:00	<b>Small Mammals Talk Hazel Ryan</b>	United Reformed Church
Sunday 14 <sup>th</sup> September	08:00	<b>Wildlife Walk</b>	Long Rock, meet at Skate Park

All welcome. Events are free unless otherwise stated. Where booking is required, please email

**Ct5.eco@outlook.com** to book.



# FIESTA (Not) on the Beach

**AFTER** the success of last year's Fiesta on the Beach, when we raised about £900 for the carnival, we decided to have another go. And with the kind permission of James Green we went ahead and chose Saturday June 7 because it wasn't too close to Carnival day, August 2nd.

Bands were contacted (all, except one, from Whitstable), a sound engineer engaged (Matt Bate), bar and food staffing rotas defined, portaloos ordered, security hired, temporary events notice from the council successfully applied for.

But the great British weather had other ideas and by the Tuesday before the gig we had decided to postpone.

When we heard that the Umbrella Centre was available, Fiesta On the Beach (FOB) became Fiesta Not On the Beach (FNOB). However we could only get in at 5pm so we had to drop some bands. Luckily Matt Bate and crew got in to prep the day before and the first act, **Hélène Williams** and **Peter Coyte**, began at 5.30pm.

We ran 8 acts in 6 hours. The words 'best ever music event in the Umbrella' and 'historic' were bandied about.

The other 7 acts were:

**Lee Walsh**

**Alabaster Orphans**

**China Soul and Chris**

**Nigel Martyn and Clouds Amongst Fear**

**The Dead Pelicans**

**Centurion Sect**

**Fax Machine**

We had around 150 audience members throughout the evening paying between £5-£10 depending on the depth of their pockets.

The Carnival committee rolled up their sleeves and became bar and door staff to great effect.



**OPENING: Hélène Williams**

Matt Bate and his crew, Mike and Paul, created crystal clear tip top amazing quality sound. And on the final count we raised £1700!

I doubt we have the energy to get on the beach for FOB this year so we'll have to wait till next year. But we're running a stage outside the Library on carnival day—6 hours of DJs and bands. So watch out for that.

Also keep your eyes open for future Carnival events at the Umbrella Centre with live bands. We hope to do four a year.

**Thanks so much to all involved and all who came. And a special thanks to Craig and Paul at the Umbrella. You are all amazing.**

# each: June 7th 2025



**LINE UP** – from top left:

**Lee Walsh**

**China Soul and Chris**

**The Dead Pelicans**

**Centurion Sect** Photo: Barbara Antinoro

All other photos by Andrew Hastings

**LINE UP** – from top right:

**Alabaster Orphans**

**Nigel Martyn and Clouds Amongst Fear**

**Fax Machine**

# THE COACH AND HORSES: A WHITSTABLE

**THERE'S** a pub down Oxford Street that doesn't just serve drinks. It serves belonging. The Coach and Horses, now run by Sarah and Maddie, has become one of the warmest, most generous corners of Whitstable.

## two London hearts, one Whitstable home

They came here from London in 2020, both a little weary of city life. Sarah already had family in Whitstable, so the pull was there. Back in London, they'd been running pubs just streets apart, technically rivals, but both buzzing with music, people and heart. So when the Coach and Horses became available, they didn't think twice. "We gave it a lick of paint and got stuck in," Sarah says. (It was more than a lick of paint.)

## where music took root

At first, food wasn't even on the cards, so they leaned into what they knew best: music. Saturday nights became CoHo Collective, now with over 25 DJs on rotation. There are garage nights, Prince tributes, even Bluefinger neon parties where they black out the pub and everything glows.

### PROUDLY LOCAL

On Fridays, CoHo Live takes over, with musicians from Whitstable, Herne Bay and Canterbury filling the room with sound. Some travel in from London or Bristol, but most are proudly local. It all began with open mic nights run by Rick West and Barbara Antonino, and now it's a whole scene.

## a team on the brink of backing

Maddie and Sarah are currently in talks to sponsor the Crazy Horses women's roller derby team, after a brilliantly chaotic conversation with team member Charlie.

### PARTNERSHIP

The partnership is about to be confirmed, and the energy is already infectious. It's a perfect fit, gutsy, grassroots, and gloriously unpolished.

## for the carnival for the town

Their support for the Whitstable Carnival has been extraordinary. Last year, they transformed the garden into a temporary licensed venue, brought in DJs, hired security, and funded the whole thing themselves. Buckets were passed round and came back heavy with coins. This year, they're adding live bands. Every penny goes to the carnival association.

### VOLUNTEERS

They've kept our volunteers fed too. Last year it was homemade chilli, thick, smoky, and spiced just right, spooned into bowls with a side of warmth. This year, they'll do it again.

## quiet generosity

They've raised money for causes like SOS Whitstable, amongst others... when Whitstable Marine Environment Group lost its council insurance, the Coach and Horses stepped in quietly, covering the cost with no fuss. Plans for future fundraisers with Revival Café are already bubbling.

## young artists, big walls

One of their proudest collaborations is with the Far Skate Academy. Students from the academy, young people who don't always find their footing in traditional classrooms, painted the mural on the outside wall. Their talent is vivid and growing. Those same students are now designing skateboards to be hung and sold inside the pub, raising money to support more of their work.

## a living space for art

Inside, the back room is often given over to the profanity embroidery group, who stitch out truth and humour in bold thread. Sarah and Maddie keep the teapots filled. Local artist Chris Howe exhibits his work on the walls, with more exhibitions set for autumn.

## the heart of autumn

That's when the Coach truly settles into its bones. Tuesday quiz nights fill every table. The kitchen hums midweek and weekends alike, offering hot food like burgers and subs, with the kind of bar snacks that remind you of school trips and seaside chips. Thursdays bring their "fab 2 for £20" offer, hearty, honest, and brilliant value. And every



# WHITSTABLE KIND OF WELCOME



*"Students from Far Skate Academy painted the mural on the outside wall."* Photo by Gerry Atkinson

Sunday, their comfort Irish menu takes centre stage, with slow-cooked stew, buttery colcannon, and all the warmth of a Dublin kitchen. It's become a quiet weekly tradition.

## **play it again**

Retro games nights are on their way back too. The first one, all Mario Kart, N64 buttons and throwback joy, was a hit, but the organiser lived too far away to keep it up. Now, Sarah and Maddie are crafting a new plan to bring it back home.

## **a Christmas for everyone**

On Christmas Day, they opened the pub for a few hours. They expected thirty people. Over a hundred turned up. The kitchen dished out 300 pigs in blankets, roast potatoes and gravy. All free. Some staff who'd just popped in for a drink jumped behind the bar to help. Because that's the kind of place it is.

## **a garden in exchange for dinner**

Even the garden outside is community grown. A group of local women tend it lovingly. In return, they're fed every Sunday, one generous act folded into another.

Sarah and Maddie didn't set out to become the heart of anything. They just wanted a pub. Whitstable gave them a place. They gave Whitstable a home.

## **Come in. Then come back.**

Come see what they've built. You'll feel it the moment you walk through the door.

And while you're at it, join in Maddie O'Shea's Guinness Game, a pub tradition since 2012, still going strong, still raising spirits.

Most pubs don't have live music. Some do duos or Karaoke. A few do covers bands. None in Whitstable do originals. Even Canterbury has few.

### **COURAGE**

You have to go to Margate or Folkestone for something this innovative. Maddie and Sarah have had the courage and vision to do something else.

Of course it's been a slow build. Audiences aren't always drawn to originals. They prefer the easy hit of the familiar tune, so it takes patience to wait for the crowd to arrive but it's happening. The word is spreading.

**Oh and by the way they run an absolutely cracking open mic night. Fortnightly on Thursdays.**

**“  
BUY THE  
UMBRELLA!  
”**

**SCAN ME**

**FOR THE COMMUNITY  
WITH THE COMMUNITY  
BUY THE UMBRELLA CENTRE**



Join us for this summer's exciting **Summer Reading Challenge** open to all primary school age children.

*The theme for the children's Summer Reading Challenge is 'Story Garden'.*

***This year's events at  
Whitstable library:***

Saturday 19 July	Bird Feeder Craft 10.30-11.30
Thursday 24 July	Planter making Craft 10.30-11.30
Friday 1 August	Theatre puppet craft 2-3.30
Tuesday 5 August	Garden in shoebox 2-3
Saturday 16 August	Explore Learning Hidden Glade
Tuesday 19 August	Liner wreath craft 2 - 3
Thursday 28 August	Flower basket craft 10.30-11.30

**Opening times:**

Monday	10 - 12.30 and 1.30 - 5
Tuesday	10 - 12.30 and 1.30 - 5
Wednesday	10 - 12.30 and 1.30 - 5
Thursday	10 - 12.30 and 1.30 - 6
Friday	10 - 12.30 and 1.30 - 5
Saturday	10 - 12.30 and 1 - 4
Sunday	10 - 12.30 and 1 - 4

# INVICTA COURIERS

*Kent's Leading Ambient & Refrigerated  
Courier Service*

- **Same Day Delivery**
- **Next Day**
- **Timed Deliveries**



**Call us on 01227 773030 for a quote  
or more information**

**[control@invictacouriers.com](mailto:control@invictacouriers.com)  
[www.invictacouriers.com](http://www.invictacouriers.com)**



## Advance Domestic Appliances

Your Independent Retailer

Family Owned and Run Business offering  
**TOP QUALITY ELECTRICAL APPLIANCES**  
including Bosch, Hotpoint, Beko, Blomberg  
– all at competitive prices.

Established since 1988 - Member of Euronics,  
the largest electrical buying group in Europe.

**FREE LOCAL DELIVERY** on large appliances.

**Installation & Repair Service Available**



42 Oxford Street, Whitstable CT5 1DG  
01227 274359 [www.advancewhitstable.co.uk](http://www.advancewhitstable.co.uk)



 **euronics**

The graphic is divided into two main sections. The top section has a dark blue background with stars and a purple banner that reads 'FROM RUSH HOUR' in yellow, with a yellow car icon. Below this is an orange banner that reads 'TO LUSH HOUR' in white, with a yellow car icon. The bottom section has a yellow background with a cartoon illustration of a man and a woman smiling, a cocktail glass, and confetti. Text in this section includes 'We stock everything you need to relax after your work is done', 'The offy, 5 High St', '01227 272114', and 'open until 9PM'. There is also a small text box that says 'Take out our f and s for special rewards &amp; discounts'.

## EVOLUTION HEALTH THERAPISTS

- Bowen Technique
- Chiropody / Podiatry
- Chiropractic
- Counselling
- Health, Fitness & Weight Loss
- Homeopathy
- Hypnotherapy
- Lymphatic Drainage
- Physiotherapy
- Reflexology
- Therapeutic & Sport Massage



### EVOLUTION HEALTH

The Centre for Wellbeing  
62 Borstal Hill  
Whitstable  
CT5 4NA

**Tel: 01227 273821**

[www.evolutionhealth.co.uk](http://www.evolutionhealth.co.uk)

# Whitstable Social Club

*The After Party till late*

12 Belmont Road, Whitstable CT5 1QP



**Live Music**  
7-9 from  
'just for fun'

**Free Admission**  
**All welcome**



❁ *Whitstable Wetherspoon* ❁

# The Peter Cushing



*Food &  
drinks!*



16-18 Oxford St,  
Whitstable CT5 1DD

**August 2nd 2025**



*Come visit us during*  
**The Whitstable Carnival**



# WHITSTABLE UMBRELLA: "for the community, by the community"

The Whitstable Umbrella Community Centre has, for over 30 years, grown from the former community group into a vibrant charity, managed by trustees and largely self-funded through room hire and occasional grants, with a rent concession from the council.

It functions as more than just a venue: it's a social hub, hosting everything from yoga and antique fairs to live music, wrestling, a co-working space, and a subsidised café.

Key hurdles include maintaining an ageing building, which recently required essential exterior repairs—such as guttering and window restoration—thanks to a grant from Asda Foundation. Financial strain hit particularly hard in 2023 where some projects had to be halted to remain financially viable.

Looking ahead, the Centre is developing "Soundhouse Whitstable"—a vision of a music hub with rehearsal and recording studio, live-event equipment, and a supportive space for emerging local artists, all whilst maintaining current support and activities.

*Over the next five years they aim to:*

Achieve stable finances, enabling extended hours for the Garden Café and wider community access

Upgrade creative facilities and host workshops under expert mentorship

Further reduce room hire rates to empower community projects and start-ups

Launch further support for small groups planning community events.

All of this aligns with our mission to remain "for the community, by the community" – nurturing connection, sustainability, and creativity in Whitstable.

**For more information please go to:**

**[www.umbrellacentre.co.uk/](http://www.umbrellacentre.co.uk/)**

**Or find us on Facebook:**

**@Umbrella Centre**



*"It functions as more than just a venue: it's a social hub"*



**Soundhouse Whitstable**



# SCANMAN

COMPLETE LABELLING SOLUTIONS



## SCANMAN UK IS PROUD TO SUPPORT THE **WHITSTABLE CARNIVAL** WITH CUSTOM

QR CODE STICKERS! AND WE'RE HERE FOR YOU TOO!



NEED HELP WITH LABELLING OR BARCODING? CONTACT  
01642 248 881 FOR EXPERT SUPPORT AND SOLUTIONS.

QUOTE **WHITSTABLE10** FOR 10% OFF YOUR FIRST ORDER!

EMAIL: SALES@SCANMANUK.COM

## All TYRES & WHEELS LLP



**BOSCH**



**DUNLOP**

**GOODYEAR**

**HANKOOK**  
driving emotion

**PIRELLI**

**point S**

### A PROFESSIONAL TYRE FITTING AND REPAIR SERVICE

- 3D WHEEL ALIGNMENT
- AIR CONDITIONING
- MOTs
- SERVICING
- BATTERIES
- EXHAUSTS
- BRAKES
- PUNCTURES

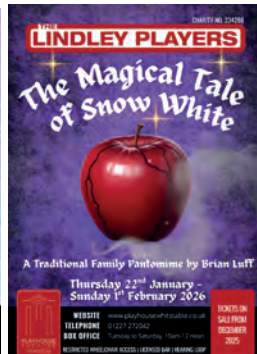
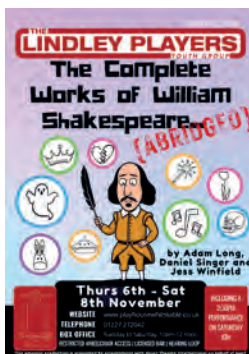


- ✓ Instant Price
- ✓ No Online Payment
- ✓ Reserve Online
- ✓ Fitted Locally
- ✓ Nationwide Coverage

Call: 01227 266888 Whitstable  
Call: 01795 539617 Faversham

The Arches, Belmont Road, Whitstable, Kent CT5 1QP [www.alltyreswhitstable.co.uk](http://www.alltyreswhitstable.co.uk)  
Ospringle Road Garage, Faversham, Kent ME13 7LJ [www.alltyresfaversham.co.uk](http://www.alltyresfaversham.co.uk)

# The Lindley Players



**THE LINDLEY PLAYERS currently have about 400 members—but we are always looking for more!**

All our productions are open to the public but, if you are interested in getting more involved, annual membership is just £20 with discounts for students and the over 60's. We need not only performers and directors but volunteers interested in helping backstage and with lighting, sound, make-up and costume, as well as bar staff, front of house and box office. Please get in touch with us during our box office hours if you are interested in hearing more or pop along to our coffee morning any Saturday from 10am-12 noon – all welcome. Or come to our annual Open Day on Saturday 20th September from 11am to 2pm.

We have a great a varied programme of productions coming up in 2025/26 including:

■ **Into the Woods by Stephen Sondheim** – Wed 10th to Sat 13th September at 7.30pm (Matinee performance Sat 13th 2pm)

Step into a world where fairy tales collide in Stephen Sondheim's spellbinding musical about dreams, consequences, and what happens after "happily ever after."

The Baker and his Wife wish for a child, Cinderella longs for a different life, and Jack hopes his cow will finally give milk. When a mysterious Witch offers a chance to break a powerful curse, their paths cross in a dark and magical forest where wishes come true—but not without a price.

■ **Rule of Thumb by Agatha Christie** – Wed 8th to Sat 11th October at 7.30pm

Join us for an evening of three one-act thrillers from the world's most-read mystery writer—Dame Agatha Christie.

In *The Wasp's Nest*, Hercule Poirot comes between a bitter triangle of lovers to prevent a sinister murder; in *The Rats*, adulterous lovers find themselves lured

to a flat, only to be trapped like rats and framed for murder; and completing the triple bill is a tense thriller about a woman who is hospitalised after seemingly falling from her balcony in *The Patient*...

■ **The Complete Works of William Shakespeare...** (abridged) by Daniel Singer, Adam Long & Jess Winfield – Thurs 6th to Sat 8th November at 7.30pm (Matinee performance Sat 8th 2:30pm)

A fast-paced, side-splitting romp through all 37 of the Bard's plays (plus a few sonnets) in just 90 madcap minutes.

The youth group race through comedies, histories, and tragedies at breakneck speed, using wigs, props, bad accents, and even audience participation to bring Shakespeare's genius to life—with a generous dose of chaos and comedy.

■ **The Magical Tale of Snow White by Brian Luff** – Thu 22 to Sun 25 January & Wed 28 January to Sun 1 February (Matinee performances: Sat 24 & Sun 25 January/ Sat 31 & Sun 1 February 2025)

Join us on a spellbinding journey through enchanted forests and mystical realms as Snow White and her friends outwit the evil queen. Expect laughter, songs, and plenty of audience participation in this heartwarming and magical production!

## TICKETS CAN BE BOOKED ONLINE AT:

[www.playhousewhitstable.co.uk](http://www.playhousewhitstable.co.uk) —or pop into our friendly Box Office between 10am and 12 noon, Tuesdays to Saturdays. *Members are entitled to a £2 discount on all tickets purchased for the Lindley Players' productions.*

The Lindleys are part of the Whitstable community and, as such, we are always keen to be involved with local events and have been regular participants in the annual Whitstable Carnival for many years.

*Look out for us in the procession on the day and give us a wave!*



# GEORGE'S

MINI MARKET  
17 High Street



Whitstable's ONE STOP  
SUMMER SHOP



## The Tudor Tea Rooms



Open for  
Breakfast, Lunches and  
Afternoon Teas

29 Harbour Street, Whitstable  
[www.tudortearooms.co.uk](http://www.tudortearooms.co.uk)  
[tudortearooms@gmail.com](mailto:tudortearooms@gmail.com)

01227 273167

# Seven Seas

Fish Bar & Restaurant



Opening Times  
Mon-Fri 11.30-14.00 16.30-21.00  
Sat 11.30 - 21.00  
Sun 16.30 - 20.30



We cook fresh food to order while you wait

22-24 Canterbury Road Whitstable CT5 4EY  
01227 274986

# **CELEBRATE CARNIVAL SEASON AT THE NEPPY**



**OLD NEPTUNE AKA THE PUB ON THE BEACH  
SERVING YOU UP FRESH FOOD DAILY, LIVE MUSIC, A GREAT SELECTION OF  
BEVERIDGES AND A MIGHTY FINE VIEW!**

**COME AND HANG OUT, MARINE TERRACE, ISLAND WALL, WHITSTABLE CT5 1EJ**





*Copperfields*  
OF WHITSTABLE

Cookshop & Homewares Since 1956



Supporting



*Inspiration for your kitchen and home*

OPEN 7 DAYS A WEEK • 93-95 High Street, Whitstable

01227 273519

## LEN'S BARBER SHOP

01227 274245

**WALK INS  
WELCOME**



## Lens Barber Shop

83 High Street - Whitstable

SCAN HERE TO BOOK APPOINTMENTS



Could you join us to  
**COOK, SHARE & CARE?**



[www.food-friends.co.uk](http://www.food-friends.co.uk)





**Exciting new**  
**FITNESS CLASSES** in  
**Tankerton** aimed at  
**encouraging people**  
**in their 40s, 50s, 60s**  
**– and beyond to be**  
**more *active, fitter,***  
***healthier.***

To book your **FREE FIRST SESSION**  
 - email [ted@fitnessoverforty.co.uk](mailto:ted@fitnessoverforty.co.uk)  
 or visit [www.fitnessoverforty.co.uk](http://www.fitnessoverforty.co.uk)  
 Class prices: Pay as you go = £11.00  
 Buy a block of ten classes = £9.00



Join our Fitness Revolution!  
 Get fit, meet new people as you huff, puff and  
 regain your self-confidence and zest for life!



Friendly sociable sessions for all abilities  
 Strength, cardio and flexibility in every class  
 Plus healthy lifestyle and dietary advice

Contact Ted for more details:  
 t. 07779 834364  
 e. [ted@fitnessoverforty.co.uk](mailto:ted@fitnessoverforty.co.uk)  
[www.fitnessoverforty.co.uk](http://www.fitnessoverforty.co.uk)



SMALL BATCH KENTISH PINK  
**WHITSTABLE HARBOUR GIN**  
 WHERE THE WORLD IS YOUR OYSTER

HAVE YOU TRIED  
 OUR AWARD WINNING  
**KENTISH CHERRY & HIBISCUS**  
 WINNER - KENT SPIRIT OF THE YEAR 2024



**4 - 5 Harbour Street**  
**WHITSTABLE**  
**CT5 1AG**  
[www.WhitstableHarbourGin.co.uk](http://www.WhitstableHarbourGin.co.uk)

**Wheeler's Oyster Bar**

WHITSTABLE . 1856



**SEAFOOD RESTAURANT**  
 8 High Street  
 Whitstable CT5 1BQ  
[www.wheelersoysterbar.co.uk](http://www.wheelersoysterbar.co.uk)

# The Coach and Horses

## A nice Pub - For nice People

Traditional Pub Grub / Bar Snacks / Sunday Lunch

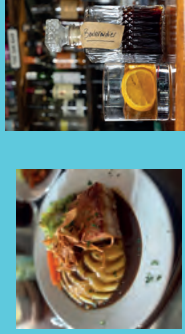
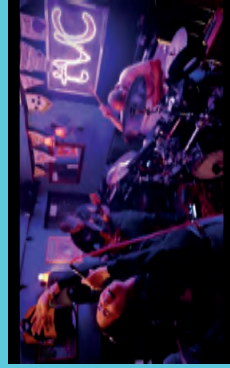
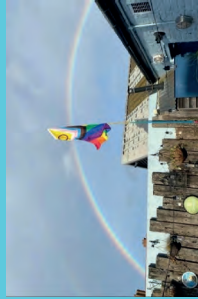
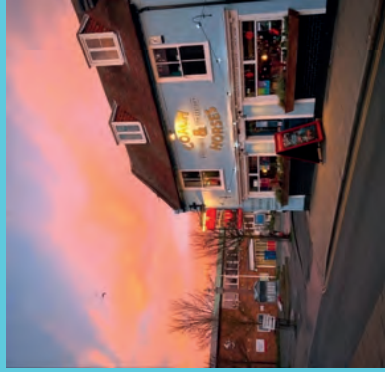
Pub Quiz every Tuesday

Games Night every 4th Wednesday

Open Mic 2nd & 4th Thursday Monthly

Live music Every Friday

CoHo Collective DJs Every Saturday



37 Oxford St  
Whitstable  
CT5 1DB



Follow us @coachandhorseswhitstable to keep up to date

# *Time for something **FAR** better*

## ***Have you been looking for the right specialist college?***

- FAR Academy is a specialist post 16 provision for young people who struggle with their social emotional and mental health. For those who have an EHCP or need support in obtaining one.
- Practical learning in a holistic and nurturing environment, a bespoke approach to each individual student with small classes.
- Our courses include the practical subjects of Art, Graphics, Photography and Business Enterprise. Plus a range of bespoke courses alongside Functional Skills Maths and English.

**Enrolling now for September 2025 Start**

**Visit [www.faracademy.org](http://www.faracademy.org) for more  
information or email [hayley@farskate.co.uk](mailto:hayley@farskate.co.uk)**

FAR Academy CIC  
Unit 77/78 John Wilson Business Park Whitstable  
Kent CT5 3QT - 01227 779181







**Unit 17  
Joseph Wilson Ind Est  
Whitstable  
Kent, CT5 3PS**



**Small Vans From £40 Per Day**



**Medium Vans From £50 Per Day**



**Large Vans From £55 Per Day**



**Luton Vans From £80 Per Day**



**01227 772277**

**Located  
Behind  
Tesco**



*Great prices instore and online*

<https://mfabowl.com/whitstable/>



*MFA Bowl,  
Tower Parade,  
CT5 2BJ*

*Find us just outside the town, next to the harbour*



## Value you therapy

New low cost counselling service starting September 2025

**Value YOU Therapy**

Affordable Therapy for All

[www.valueyouththerapy.com](http://www.valueyouththerapy.com)

[info@valueyouththerapy.com](mailto:info@valueyouththerapy.com)

# Whitstable Views

*Free and independent online citizens' journalism*

FROM CHRIS STONE,

JULIE WASSMER AND THE TEAM

*DON'T LET THE MEDIA CONTROL YOUR VIEWS*



**YOUR chance to read and contribute news and views  
on local, national and international issues**

**Over 300 articles to date about issues that affect us all  
Subscribe for FREE @ [www.whitstableviews.com](http://www.whitstableviews.com)**

***For Whitstable and the World!***

**Find us on Facebook:  
@WhitstableViews**



AcornTV

All three series  
streaming now.

# WHITSTABLE PEARL



★★★★ —Heat

“Polished take on Julie Wassmer’s moreish  
mystery novels... compelling” —Daily Mail

“Kerry Godliman is so good... a standout star” —The Sun

Acorn TV is a world-class streaming service chock full of premium, original crime-drama, including all three series of *Whitstable Pearl*, based on Julie Wassmer's bestselling novels and starring Kerry Godliman (*After Life*) in the title role as a restaurateur turned private detective.

## STREAM FREE FOR 14 DAYS

Go to [acorn.tv](https://acorn.tv) and click START FREE TRIAL

Then just £4.99 a month.

No adverts, no contract, cancel anytime.



LEARN MORE

*You are all amazing!*

*Our thanks go out to everyone who has played a part in the creation of this year's carnival.*

Umbrella Centre,  
Rick West (for Fiesta on the Beach),  
Andrew Hastings (photos Fiesta on the Beach),  
Gerry Atkinson (for other photos), Jo Hinson (Social Media),  
Sarah and Maddie at the Coach and Horses for their support,  
Chris Stone for his,  
Jon Flaig for the programme,  
Rob Holness and Mark Thomson plus all volunteer Marshals,  
George Begg at Samphire,

James Green,  
Rev. Tillotson, St Alphege Church,  
Whitstable Lions,  
Wetherspoons,  
all those who gave raffle donations,  
Derek Theobald,  
Pax Nindi,  
Andy Birkett for the advice,  
Terresa Askew for mending Sam,  
Justin and Emily,  
Nick Dent,  
Mrs Kelly Bradley,  
the Carnival Creative group,  
East Kent NEU Branch,  
Harbour Street Tapas,  
Victoria Hire, Hire One  
and all new and past members.

# VICTORIA HIRE

## CAR & VAN RENTAL

**Your leading car and van hire specialist**

- small cars, hatchbacks, estate cars, luxury vehicles
- a wide choice of vans including Luton tail lift and XLB vans
- we are a trustworthy, family company trading over 60 years



**Find us on Facebook for special offers & promotions!**

**CALL US NOW ON 01227 274089**  
**BOOK ONLINE [WWW.VICTORIAHIRE.CO.UK](http://WWW.VICTORIAHIRE.CO.UK)**

# Have you ever wondered how much it costs to stage the carnival?

Whilst we rely heavily on volunteers we have many fixed costs - licences, ambulance crew, insurance, costumes, marshal management, posters, signage, programme printing and many more.

Last year we spent around £8000 on making the day happen. We fund this with a number of fund-raising efforts - in recent years we have held: music festivals, benefit gigs, auctions, raffles, we sell advertising space in the programme and are lucky enough to receive the occasional donation.

A promotional poster for Inclusive Fitness. The background is dark blue with a faint image of a gym interior. At the top left, the text 'INCLUSIVE FITNESS' is written in large, bold, white and pink letters. To the right is a pink heart icon containing silhouettes of people exercising. Below the title, the address 'UNIT 122, JOSEPH WILSON INDUSTRIAL ESTATE, WHITSTABLE, CT5 3SN' is listed. Three checkmarks with labels 'PARKING AVAILABLE', 'WHEELCHAIR FRIENDLY', and 'AIR CONDITIONING' are shown. The tagline 'A small gym with a big heart.' is centered. Below it, 'The home of HEALTH and HAPPINESS' is written in large, bold, white and pink letters. On the left, 'ALL MEMBERS RECEIVE A FREE 60 MINUTE INDUCTION' is written. In the center, a white arrow points to a pink 'SCAN' button. To the right of the button are two QR codes labeled 'ANDROID' and 'IPHONE'. Below the QR codes, the text 'BREAK BARRIERS TOGETHER' is written. At the bottom, 'ON-SITE GP REFERRAL PROGRAMME' is written, followed by two checkmarks with labels 'WEIGHT MANAGEMENT SUPPORT' and 'DIABETES MANAGEMENT SUPPORT'. The footer contains the text 'CHANGE STARTS WITH A CHAT' and contact information: an email icon followed by 'info@inclusive-fitness.co.uk', a globe icon followed by 'www.inclusive-fitness.co.uk', an Instagram icon followed by '@inclusivefitness', and a phone icon followed by '01227 202513'.

**Our goal is to donate all money raised on the day to local charities, last year we donated £3200.**

This year we will have the usual collecting buckets, you will also notice QR codes in the programme, on stickers in various locations and on t-shirts worn by carnival volunteers, please give generously and be assured that the goal of carnival committee is to continue to manage our funds to maintain this incredible tradition.



# Whitstable Carnival 2025 • Conditions of Entry.

Whilst we hope you all enjoy participating in Whitstable Carnival, certain common sense rules must be strictly adhered to for legal reasons, the smooth running of the procession and the safety and comfort of everyone involved. Please take the time to read and consider the Conditions of Entry listed below, before taking part in the carnival. Whitstable Carnival Association can not be held liable for any damage, injury or loss arising from any group or individual's failure to adhere to these conditions, which constitute part of your entry into this community event.

## PROCESSION ASSEMBLY.

- No floats to arrive at the assembly point (or leave the dispersal point) with persons on back of vehicle.
- All vehicles must be roadworthy and legal (i.e. Taxed, MOT'd) and suitably insured for such events as this. Whitstable Carnival Association will advise. Please ensure you have copies of all relevant documentation with you.
- If generators are used, an appropriate fire extinguisher must be carried.
- An appropriate number of adults must supervise if children are involved in the entry.
- Please ensure you follow correct assembly instructions.
- Please be aware when assembling your float, of any traffic hazards.

## PROCESSION.

- No items to be thrown from floats (e.g. water, powder or any substances or objects).
- Adequate spacing should be left between entries.
- Walkers must walk to the side of floats – never in front or behind floats. Please do not hang onto a moving vehicle.
- Drivers must keep control of their vehicles at all times.
- The procession will be kept moving at all times, unless advised by the Police or an official Carnival Marshal.
- No counter-marching from any band or majorette troupe is allowed.
- No jumping on or off floats while the procession is moving. Speed limit is to be kept to a walking pace. Please provide protection over the wheels, if children are to be seated with their legs hanging over the side.
- No person to travel or walk on draw bars of any tow vehicle.
- Please be aware when interacting with the crowd not to frighten the children. Some disabilities (such as autism) are not always visible.

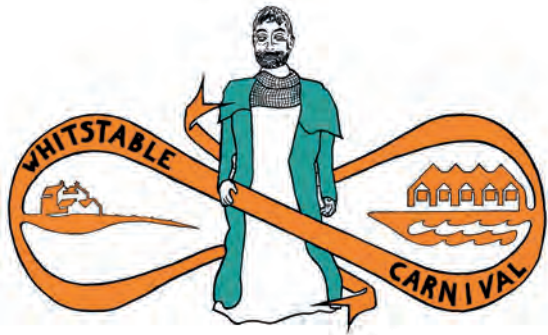
## DISPERSAL.

- Floats to stop at organised money collection points. All monies collected are the property of Whitstable Carnival Association and must be handed over to the Carnival Officials before dispersal.
- Marshals will direct all entries to the dispersal area. All persons must then alight and under no circumstances will they be permitted to travel on the floats after dispersal. This is on Police instructions.
- At this stage, normal traffic/highway rules will apply.
- Please ensure that adequate transport is at the dispersal area for your journey home.

## GENERAL.

- If you have a suitably qualified First Aid trained person with your entry, could you kindly inform the office when you first arrive, ask for a 'Green Cross Card' and then display this in a prominent position in the cab of your vehicle. For non-powered entries, would you please ensure that the card is displayed in another prominent position on your entry. This card enables the marshals, officials and police quickly to identify you in the unlikely event of an incident requiring First Aid assistance.
- Any person maliciously throwing any item (coins, water, missiles, etc) should be reported to an official or Police Officer, immediately. This year, we will attempt to dissuade people from throwing any coins whatsoever, but as it has been a recognised practise for a few years, Whitstable Carnival Association can not guarantee that there may not still be some coin throwing this year.
- All Marshals and Officials will wear green/yellow high-viz. vests, for clear recognition.
- **NO ALCOHOL OR DRUGS IS PERMITTED ON ANY FLOAT EITHER BEFORE, DURING OR AFTER THE CARNIVAL PROCESSION. ANY PARTICIPANT IN THE PROCESSION, WHO IS DEEMED TO BE INTOXICATED FROM DRUGS OR ALCOHOL, WILL NOT BE PERMITTED TO TAKE PART. THE POLICE AND OUR MARSHALS HAVE THE POWER TO, AND WILL ENFORCE THIS RULE, BY DEMANDING THE IMMEDIATE WITHDRAWAL FROM THE PROCESSION AT ANY POINT, IF THIS RULE IS NOT STRICTLY ADHERED TO.**
- Cups and trophies are the property of, and must be returned to, Whitstable Carnival Association. Any loss or damage shall be the responsibility of the individual signing for it.
- The Whitstable Carnival Association reserves the right to cancel or postpone the Carnival Procession and will not be held liable for any loss or damage that may arise therefrom. The Whitstable Carnival Association may, at their discretion, withdraw any entry.
- The safety of your float/entry is entirely your responsibility. Ensuring the safety of all persons within your entry, all other participants and all bystanders, must be your paramount concern when designing, constructing and processing with your float/entry. Please ensure you take all reasonable steps possible to eliminate risk and help ensure a safe, secure and enjoyable carnival for everyone.

*Many thanks everyone. Let's make Whitstable Carnival 2024 a carnival to remember...for all the right reasons!*



## Whitstable Carnival 2025 - Saturday 2nd August 2025

To enter the carnival, please complete the form below and return it as soon as possible to:

W.C.A. 16 Underdown Rd, Herne Bay, CT6 5BP

Or by email to: [entry@whitstablecarnival.co.uk](mailto:entry@whitstablecarnival.co.uk)

Subject to eligibility, you may enter the following classes:-

- |         |   |   |
|---------|---|---|
| Class A | - | Regional carnival courts                    |
| Class B | - | Motor drawn, animal drawn or powered floats |
| Class C | - | Wheeled carts, trollies & buggies           |
| Class D | - | Bicycles                                    |
| Class E | - | Pedestrians                                 |

Cups are awarded to the winners of the above categories B-E. Some sub-dividing of categories will be recognised within the prize giving (e.g. Trade/Public; Group/individual; Adult/child). Prize cards are awarded to all winners and runners-up. All cups must be returned to Whitstable Carnival Association by July 1 2025.

Procession leaves Tankerton at 5.30pm. You will get your Float number and joining instructions two weeks before the carnival.

Late entries will be accepted on the day until 4pm. Final details will be forwarded to all entrants, nearer the date. If you are unsure of the category of your entry or have questions please email us or check the website.

### ENTRY FORM 2025

Name of entrant: \_\_\_\_\_

Title of entrant (if applicable): \_\_\_\_\_

Class (see list above): \_\_\_\_\_

Your address: \_\_\_\_\_

Contact Phone(s): \_\_\_\_\_

Contact Email(s): \_\_\_\_\_

Total length of vehicle (in metres) N.B. Max height of any entry is 4.27m (14')

Please send us a Short Bio of who you are and what being in the Carnival means to you

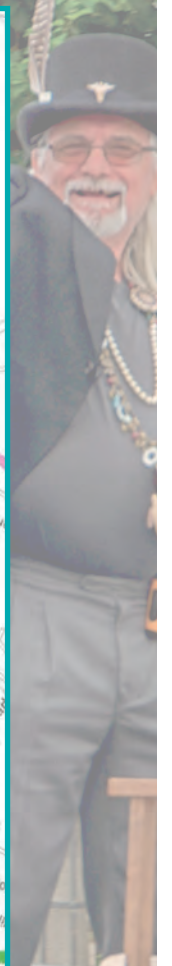
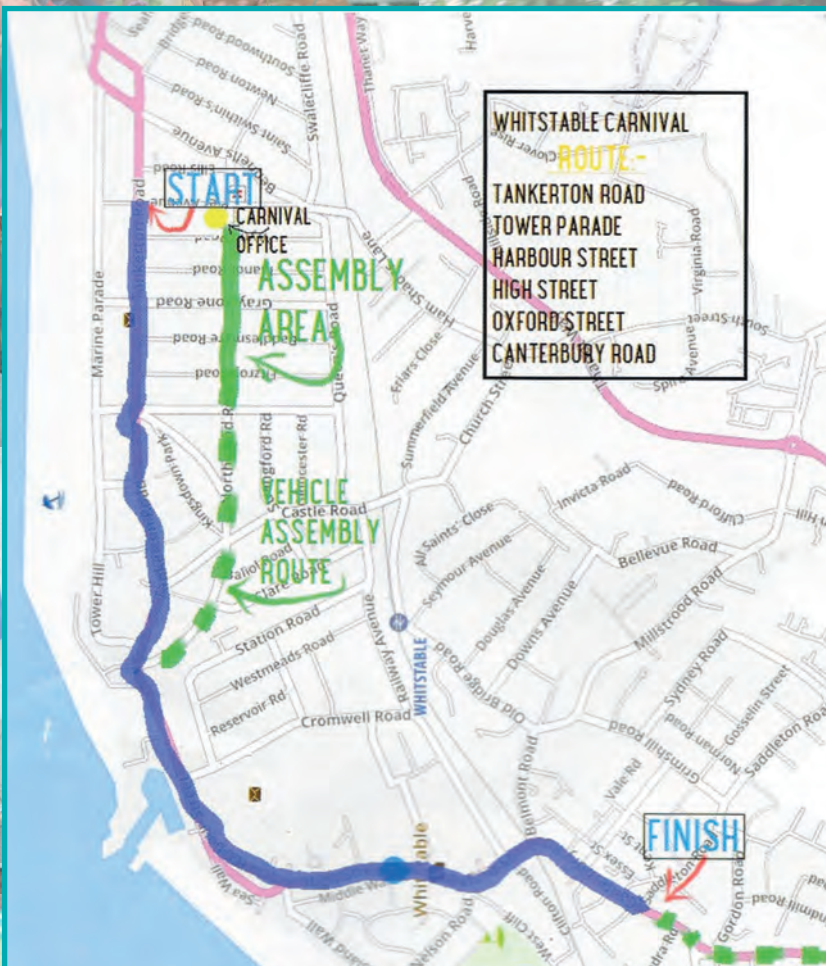
Are you noisy? \_\_\_\_\_ Do you have a PA system? \_\_\_\_\_

Are you/anyone on your team first aid trained? \_\_\_\_ Would you be happy to use these skills if needed? \_\_\_\_

DECLARATION: I have read and agree to abide by the Conditions of Entry.

Signature of entrant or group representative \_\_\_\_\_

Name of entrant or group representative: \_\_\_\_\_



# CANTERBURY ROCK

Tel: 01227 458393

12 WHITSTABLE ROAD  
CANTERBURY  
KENT · CT2 8DQ

RECORDS & CD's

**BOUGHT & SOLD**

