

WHITSTABLE

Fiesta **By the sea** **CARNIVAL**

SATURDAY
3 AUGUST

SOUVENIR
PROGRAMME 2024



A word from our Chair...

Greetings and welcome to Whitstable Carnival 2024 which marks our 127th anniversary.

This year's theme is 'Fiesta by the Sea'. The word fiesta derives from the Latin, 'festus', which is also the root for our common English words 'feast' and 'festival'. We hope that Whitstable will engage with our theme and our carnival feels like a festival and people feast and celebrate with us on the day.

There's a lot in the world today that doesn't need celebrating. Wars persist across the globe, many people lack the ability to feed themselves and corporations continue to avoid taking the actions required to ensure the safety of our planet and all of us who share it. Our carnival won't change these things, but people working together within the community holds the key to how these problems might begin to get resolved. We hope that our carnival will be a beacon of community activity.

Whatever people choose to showcase during this year's carnival it will be developed through local people engaging with others in realising their ideas, creating costumes, sets and props and then presenting themselves to parade as part of our carnival: not solving all of the world's problems, maybe, but sharing with the rest of the community their joy, their creativity and their sense of fun. This way we can begin to build the links that might help in confronting our challenges.

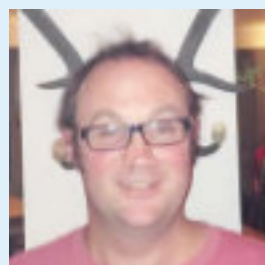
As well as providing a focus for community action, our carnival is also a product of people working together for the community. It has been planned and brought into being with the support of local volunteers under the oversight of our fantastic Whitstable Carnival committee. I would like to pay tribute to all of our volunteers, and particularly to the committee who work across the year to ensure the success of carnival day.

We are particularly excited about the additional activities being arranged for this year's carnival. Local tradespeople in Tankerton are organising additional entertainment and stalls off Tankerton High Street and the Coach and Horses are providing a music stage outside Whitstable Library.

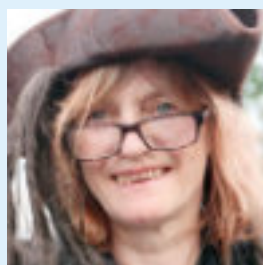
It is great to see how the carnival is developing through the work of local people and businesses and we hope that the carnival continues to develop and grow as an expression of the communities that comprise Whitstable. Onwards and upwards....



CARNIVAL Chair: Nick Dent



NICK DENT
Chairperson
Coordinator
Nick Dent the 'nicest man in Kent' - Social Healthcare worker and excellent aid to the Carnival



BELINDA MURRAY
Events
A long time Carnival supporter and ex-Chairperson now helping with carnival events and a general stalwart of the committee

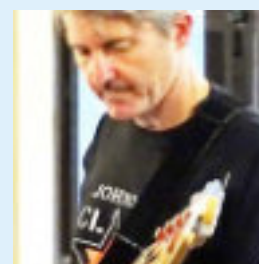
Whitstable Carnival Association Committee



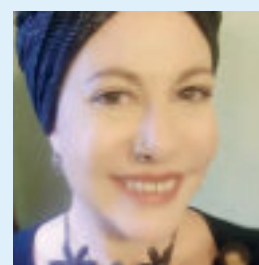
RICK WEST
Vice Chairperson
- Events
Rick has been tasked with putting on the benefit gigs and is the man inside Sam the Giant



COLIN GOTTS
Media/IT
Photographer/Film-maker and proud supporter of the carnival



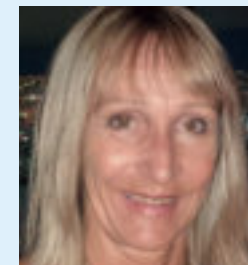
PAUL ROOKE
Treasurer
Sales Director in Software. Came to Whitstable for a weekend 8 or 9 years ago and loved it. Proud to call it home.



AURELIA DE ROCHA
Secretary
Aurelia is a professional Therapist who loves to take minutes in her spare time



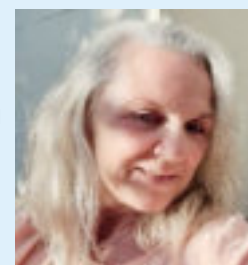
RODGER FINCHAM
This Year's Carnival Director.
Designer and Maintenance Architect. Excited to be part of this year's Carnival



MANDY HANSCOMBE HARDY
Moved to the town a couple of years ago, Mandy worked with Capt Sam's giant family near Ashford!



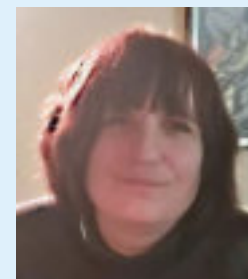
GARY HUNTER
Employed in the tourism industry for many years, in 2000 he joined one of Kent's major tourist attractions.



CINDY BRANT
Committee Member
- Fund Raising
Cindy moved to Whitstable in 2021 to settle by the sea. She has thrown her energy into raising funds



JOANNA HINSON
Committee Member,
Now living in Whitstable, Joanna has worked in education for over 30 years. Joanna paints and creates art



TANYA GIBSON
Committee Member
Have loved Whitstable & its communities for many years so happy to help in putting back.

Whitstable Carnival Association Committee

Carnival events around the town

1. AFTER PARTY, The Coach and Horses, Oxford Street. £5 on the door, all proceeds to the carnival.
2. LIVE BANDS outside the library on the day. (To be confirmed).
3. AFTER PARTY, The Whitstable Labour Club, Belmont Road. Free entry for non-members on production of carnival programme plus free jukebox!
4. AFTER PARTY, Tea & Times, High Street. Ask behind counter for details.



Best
Fish & chips
...to take away

207 Tankerton Rd
Whitstable
CT5 2AT
01227 772481

Ossie's
Fish & chips
...to eat in

205 Tankerton Rd
Whitstable
CT5 2AT
01227 266600

On the day...

The 127th anniversary CARNIVAL takes place on Saturday 3rd August 2024. Assemble along Pier Avenue and Northwood Road from 3pm.

HQ for the day will be at 15 Pier Avenue, in a gazebo in the garden.

LATE ENTRIES are accepted on the day till 4.00pm, but it will help to register early with the entry form in the program or on the website: <https://whitstablecarnival.co.uk/>. Sign in at HQ and then find your place in the procession.

JUDGING starts at 4.15 prompt. All entries must be in position by 4.00.

CARNIVAL ENTRIES: please approach along Northwood Road from its junction with Tower Parade/Tankerton Road (where the laundrette is).

COLLECTING TINS and collecting buckets will be available from HQ.

THE PROCESSION starts at 5.30, passing Tankerton Circus at 5.40, Tower Parade 5.50, the Duke of Cumberland 6.10 and the East Kent at 6.30. These times are approximate. You should be at your vantage point early to get a good view. Please don't let children run into the road as the procession passes.

PLEASE DO NOT THROW COINS as this has been known to damage property and is one of the reasons carnival has been less well attended in recent years. If you would like to make a donation, please put your coins in the collecting tins as they pass. Thank you for your consideration.

The Carnival Committee Officers:

Nick Dent – Chair,

Rick West – Vice-Chair • Aurelia De Rocha – Secretary

Paul Rooke – Treasurer

Your Carnival Souvenir Programme

Pictures and program content has been compiled and edited by Chris Stone, Aurelia De Rocha and Jon Flaig with help from the committee. Special thanks to Julie Wassmer, Joanna Hinson, Rodger Fincham, Nick Dent, Bernadette Fisher, Ann Day, Sarah Hinchliffe, Barry Toogood and Peter Banbury for the material, and to Gerry Atkinson for the photos.

© Whitstable Carnival Association 2024

Fiesta on the beach

The beach is without a doubt Whitstable's finest feature. Since we took over organising the carnival in 2019 we've put on bands and DJs to raise funds for our ever increasing running costs. On Saturday 22nd June, with permission from the Green family and the council, we organised 9 bands and a DJ on West Beach.

All the talent was from Whitstable, except one duo from south east London.

Peter Coyte with Helene Williams
Nigel Hobbins
Killing Silver
Sophie Sirota
BudDub
Saturday Sun
Klarks
Nudie Pics
Centurion Sect
Dj Futurenow

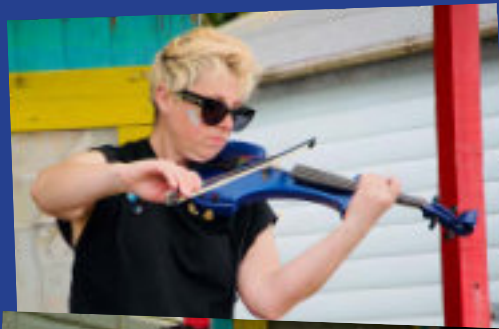
With help from top sound engineers Matt Bate and Yogi, and emceed, by Steve Graham we were able to pull off a great gig and entertain the locals.

Clare Tindall, Barbara Antinoro & Belinda Murray ran a children's costume workshop, making head dresses for children to wear at the carnival.

The weather just about held out, and we'd like to add: we left the beach cleaner than when we found it.

This was a collaboration between the carnival committee, musicians and local people all coming together to raise funds to put on an even bigger event: the carnival itself. Come and get involved on August 3rd. Your town needs you.

Photos by Gerry Atkinson.



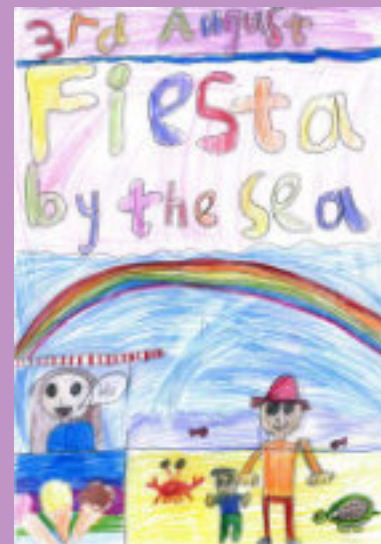
*TOP: Sophie Sirota
 NEXT: Klarks
 THEN: Saturday
 Sun RIGHT: Nigel
 Hobbins BELOW:
 BudDub BOTTOM:
 Killing Silver*



WINNER: Martha Thomas-Pollock, in Class 5H, which evokes one of our famous Whitstable sunsets! It is the boldest and most eye-catching entry, and perfect for a Fiesta theme!



WINNER: Evie White, in Class 3B, which embraces every colour in its bright and colourful stripes and includes some great details of both the sea and celebrations!



WINNER: Frankie Nicholson, in Class 3B, which embodies the friendly family atmosphere Carnival is renowned for and we wholeheartedly expect to fill the streets this August!

Poster Design CHALLENGE

This year the Whitstable Carnival Association Committee received a wonderful array of artwork from Year 3 and Year 5 at Whitstable Junior School.

These were the entries for our Poster Design Challenge and we were very impressed with the results! The children have taken the 'Fiesta by The Sea' theme and created cheerful splashes of colour that represent the Carnival spirit and catch the eye of everyone passing by!

In the run-up to August 3rd Fiesta by the Sea big day, all of the children's wonderful works will be on display at the Tesco Extra Community Space Gallery, outside the main entrance, for all to enjoy, commencing July 20th. We'd like to thank Community Champion Sam Avery at 'Tesco Extra' at Millstrood Road, Whitstable, for helping to organise the use of this space so that everyone has the opportunity to pop along and see the Children's beautiful work close up!

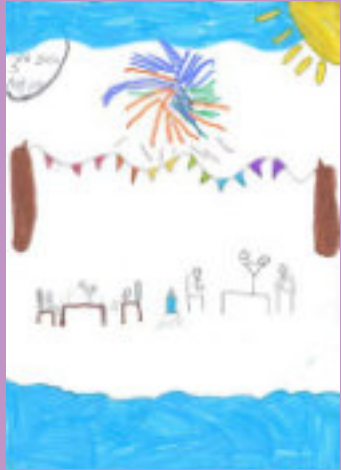
It was very difficult to choose just two drawings to use for Carnival 2024 posters, so the Committee chose three differing designs that they felt conveyed various aspects of what Carnival is meant to be. These designs can be seen here on the left.

Look out for the posters across businesses in Whitstable before and during this year's festivities!

As a reward for their hard work the children will each receive a book voucher from author Tamara MacFarlane's amazing Children's Bookshop: 'Tales On Moon Lane', plus a voucher to claim a fish and chip meal from Ossie's in Whitstable on the day of the carnival! Whitstable Junior School will also receive a voucher to select books for use in school. See over the page for runners-up entries.

We hope you appreciate their efforts as much as we do!

Poster Design CHALLENGE



^ Frankie-George Warner 5H



^ Lucille Rothwell 3B



^ TheaMartino 3B



^ Hatty M 5H



^ Norah Sansom 3O



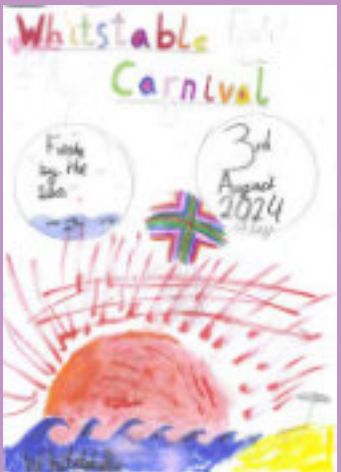
^ Chloe Proven 3O



^ Isabella 3O



^ Florence 3O



^ Rafe Thomas 5H



^ BethanyDrury 3B



^ Leo Bower 5H



^ Phoenix 3O



^ Jack 3O

WHITSTABLE

Our town's role in the popular Whitstable Pearl TV and book series plays its part in helping charities and community projects

This spring, the TV series, Whitstable Pearl, filmed its third season in our town around the same time that the first season of the Acorn TV show began airing on the Freeview channel, Drama. The shift from subscription to terrestrial TV attracted a wider audience and some great reviews but Whitstable's starring role also provided support for our local community.

During filming, the production unit was based in the car park at Tesco in Millstrood Road, with the supermarket choosing five charities to benefit from the fee – including our local RNLI, and the hedgehog charity, Dottie's Hog Hospital.

In May, the publication of my tenth book in the series, Murder at the Allotment, also coincided with filming so a special launch event was staged by Whitstable's literary festival, WhitLit, on its own tenth anniversary.

In honour of these direct connections to our town, WhitLit's director Victoria Falconer and I decided we would donate all profits from the event's ticket and book sale to a local charity – Tankerton Football Club's Pan Disability Football Team.

Three actors from Whitstable Pearl; Frances Barber, Rohan Nedd and Isobelle Molloy kindly joined us in the packed 200-seater auditorium of the Whitstable School, answering questions and entertaining everyone with anecdotes from the production. In all, £2,000 was raised for the charity.

Tankerton Football Club's CEO, Tim Elgar, spoke at the event, explaining about the charity's ambition to move to a new ground on the "Bends" between Whitstable and Heme Bay. Also present was Francoise Rossignol, the Mayor of Whitstable's French twin town, Dainville, which has hosted several visits from our famous Carnival character, Sam the Giant.

As to the new book, Murder at the Allotment is a whodunit but also a celebration of our town's precious green spaces. As well as three sets of allotments, Whitstable also has Stream Walk Community Gardens, managed by hardworking members of our local community, to whom I dedicated this book.

Duncan Down is a 13-acre area of protected land, designated as village green, and in tribute to its local volunteers, I featured this area in the sixth book of the series – Murder on the Downs.

Much of our green space is increasingly threatened by encroaching developments, but many of our important wildlife corridors still survive, including the

- the STAR of the show

By author and campaigner Julie Wassmer



TEAM PLAYERS: the TFC team with Julie



FRANCES Barber, Tim Elgar and Isobelle Molloy
photo by Gerry Atkinson

RIGHT: Another charity recipient



railway embankment mentioned in the new book. It was here that as a community we successfully fought the clearance of trees by Network Rail during the bird breeding season of 2012 when, as part of a large town protest, two friends and I chained ourselves to an oak tree to prevent chainsaws felling trees. Thereafter, thousands of starlings began to gather in the area in murmurations, in a way that led many to believe they might be giving thanks.

No-one knows why the birds perform these breath-taking displays; swooping and swerving in the sky in fascinating patterns, but I like to think that we too can achieve beautiful and seemingly impossible results if we flock together to protect our environment - and our precious community - of which this Carnival remains an integral part.

AcornTV

WHITSTABLE PEARL

"Suspense-on-sea" — Daily Mail

Acorn TV is a world-class streaming service chock full of premium crime drama, including both series of the gripping detective series *Whitstable Pearl*, based on Julie Wassmer's bestselling novels and starring Kerry Godliman (*After Life*) in the title role as restaurateur-turned-detective. With a third series in production, there's never been a better time to tune in.

STREAM FREE FOR 14 DAYS

Go to acorn.tv and click START FREE TRIAL

Then just £4.99 a month.
No adverts, no contract, cancel anytime.

LEARN MORE



CUSHING

An Exhibition of his Life and Times



Whitstable Museum

From July 13th
Thursdays to Saturdays 10:30 to 4:30
Oxford Street, Whitstable, CT5 1DB
www.whitstablemuseum.org



Van Helsing In Whitstable



Older residents of Whitstable will remember Peter Cushing as a valued member of our community.

He lived here till his death in 1994. You would often see him about town, on his bike, in his favourite restaurant, the Tudor Tea Rooms, or walking along the seafront from his home at 3, Seaway Cottages behind Island Wall.

Peter had purchased the property in 1959 after visiting Whitstable with his wife, Helen, for a holiday. Helen had a delicate constitution, and the good, clean sea air helped maintain her health. They lived here together till Helen's death in 1971, after which Peter built a shrine to her memory in the cottage they shared.

Peter loved Whitstable. He called it "the Village" as a tribute to the closeness he felt to its inhabitants. And Whitstable people loved Peter too, and were protective of his privacy. Many was the time when fans would come looking for him. They would ask directions to his house, only to face a disarming reticence on the part of residents, who would feign ignorance rather than give the game away.

Peter was famous throughout the world due to his various roles in the cinema. He played Dr Who, Sherlock Holmes and the Grand Moff Tarkin in Star Wars, amongst many others. He was a regular star in the Hammer Horror movies, alongside his friend and fellow actor, Christopher Lee. Lee often played Dracula, the undead creature of the night, while Peter played his nemesis, Van Helsing, the haunted, driven vampire hunter.



TOP: Detail from Cushing's watercolour of Whitstable Harbour ABOVE Peter with his bike in his garden. Photo Colin Bourner

In real life, Peter was a proper old-fashioned English gentleman, unfailingly polite and charming. He would always bow and kiss a woman's hand when greeting her. Despite his fame, he was completely at home in his adopted town, friendly and courteous to all his neighbours. Whitstable remembers him with affection.

Whitstable Museum is designing a major exhibition of Peter Cushing's life and times which will open in mid July. The museum is being helped by the Peter Cushing Association in collecting stories about him and Helen. The exhibition will include photographs and artefacts from his life, plus watercolours he painted himself. You can also see his famous bicycle, which we would often see him on in his jaunts around town.

There is also a leaflet available about Peter Cushing's relationship to Whitstable, with a detailed walking tour so that you can visit all the places he was associated with.

carnival in the community

By Joanna Hinson

In September 2023 we reached out to Whitstable schools offering an opportunity for a visit from local artists.

We are aware that all schools have a very busy schedule across the year so we were open to working with them to fulfil curriculum needs as well as being more than happy to help them create banners, costumes, flags, or posters for Carnival itself.

Swalecliffe Community Primary School contacted us very quickly and very enthusiastically! The school has a history of taking part in the Carnival Parade, but in it has faded in recent years and they were keen to re-join the fun!

Year 4 Teacher Kelly Bradley set about organising a way for those in all three of the year group's classes to take part in the parade during the Summer Holidays in 2024, recruiting volunteers from families and staff, and making room in the timetable for artist Elizabeth Reed to work with everyone involved. In May Elizabeth made several visits into the school and working with the nine and ten-year-olds and our theme of

Fiesta by the Sea, encouraged and steered their designs from paper to costumes ready to wear on August 3rd. The children created vibrant Fiesta by the Sea headpieces in a Mardi Gras style with a Whitstable Coastal twist, and produced equally colourful T-shirts to compliment them and to ensure they stand out on the day. The staff were wonderfully helpful in following up on the Artist's guidance and finishing the amazing carnival accessories and clothing.

The Whitstable Carnival Association are dedicated to including our community as much as possible. By funding and arranging artist to visit schools, charities, nurseries, youth centres, and other organisations, and by donating money to ensure the correct materials are available, they aim to make participation in the Parade accessible to all.

Meanwhile, Year 4 are looking forward to representing Swalecliffe Community Primary School this summer. The children will be smiling and dancing their way from Tankerton on the day, following their School minibus (which they plan to decorate too), proudly taking their space in the festivities! When you see them, give them a cheer!



The Whitstable Carnival Committee have designed a new Logo this year. The concept of this new image is to have Sam the Giant as the central figure, being instantly recognisable as an important figure in the Carnival. Wrapped around Sam is a banner which contains images of Whitstable and Tankerton, symbolised by the Old Neptune and the beach huts on Tankerton Slopes.



"The children created vibrant Fiesta by the Sea headpieces in a Mardi Gras style ..."



Let's go Wild About Whitstable in 2024!

CT5 People's Forum's Eco Group are excited to announce Wild About Whitstable week 2024 from August 12th to 18th.

This is the third year we have run Wild About Whitstable Nature Week. Our aim is for all of us to celebrate the richness and diversity of our natural world and to draw attention to the urgent threats of climate change and the depletion of Nature.

SEAWEED

Our week-long programme will feature nature events—walks and talks to discover bats, butterflies, seals, birds, seaweed, and local plants. These will be led by local experts and enthusiasts. There will also be nature-themed workshops (for children and adults) and talks and activities at venues across the town—the Horsebridge, Museum, Library, the Castle, The Umbrella Centre and StreamWalk. The week culminates with the day long Eco Fair at St John's, Argyle Rd.

GENEROUS

We are funded this year mostly by you, local people, through crowdfunding and have received a generous donation from Kent Community Energy, a Community Benefit Society dedicated to the development of renewable energy projects throughout Kent.

The Eco Fair on Saturday 17th Aug 10am—4pm at St John's, Argyle Rd—will bring together many of the participants in the week and others who share our common purpose.



For the first time in 2024 we will be working with the Bruce Williams Gallery to create an exhibition entitled 'The Natural World' where local artists will show their work on this theme for the duration of Wild About Whitstable week.

CONTACT

Details of the programme can be found using the QR code above, or by going to our website ct5peoples-forum.org

Ct5 People's Forum can be contacted via info@ct5peoplesforum.org or using the contact form on our website.



Dr. Liz McGown

Dr. Louise Whorlow

Chiropractors

GCC registered

BCA members

- Relieve pain and improve function and performance
- Back and neck pain, headaches
- Sport injuries, joint pain and muscle aches
- All ages welcome: children, teenagers, adults and elderly



EVOLUTION HEALTH

The Centre for Wellbeing

62 Borstal Hill

Whitstable

CT5 4NA

Tel: 01227 273821

www.evolutionhealth.co.uk

VICTORIA HIRE CAR & VAN RENTAL

Your leading car and van hire specialist

- small cars, hatchbacks, estate cars, luxury vehicles
- a wide choice of vans including Luton tail lift and XLB vans
- we are a trustworthy, family company trading over 60 years



Find us on Facebook for special offers & promotions!

CALL US NOW ON 01227 274089
BOOK ONLINE WWW.VICTORIAHIRE.CO.UK



Samba Pelo Ma

~ SEASIDE SAMBA ~ by Ann Day

Samba Pelo Mar, Whitstable's community band, is in our 18th year.

Over that time hundreds of people have passed through the band, moving on as life, love and work takes them elsewhere. Many are still with us and have grown from enthusiastic newcomers to skilled players and performers. Currently we have 60 members and welcome new people when possible.

We're not only a music group, we're a strong community, sharing lives, births, illnesses and bereavements. Recently we lost one of our original members, Debbie Moran, a much loved and very proficient player.

We've had members from all kinds of backgrounds, aged 12-80, with diverse identities, interests, jobs and careers. The common thread which keeps people coming is a shared love of learning—about the music—rhythms, meanings and history—and the thrill and excitement of playing together, of being part of something collective and communal.

We play 17 pieces, adding to them from time to time, unique to our band and written and taught by myself as Musical Director. Our music is created from rhythms with many influences, a few Brazilian (Rio samba, Maracatu and Afoxé with candomblé African roots) but also samba reggae, soca (soul calypso from Trinidad) North African, Bhangra, hip hop, funk, Afro-Cuban and jazz.

So we're not really only a samba band, but more accurately a percussion bloco using traditional samba instruments.... surdo

bass drums, caixa snares, chocalho shakers, tamborims and agogobells and timbas.

We love playing at carnivals, festivals, parades and events like May Day and Broadstairs Folk Festival, adding our influences to the many elements making up folk and other musical traditions.

We also play at charity events and have a special place in our hearts (as do many many local people) for Pilgrims Hospices. After the death of beloved friend of the band Jon Bird, artist, photographer, cartoonist and husband of original member Daphne, we raised £17,000 through an art auction, garden party and sponsored walks. One of the times I'm proudest of our community.

Carnival is very special to us. It's a physical feat carrying and playing from Pier Avenue to Saddleton Road! We love the giants, costumes, musicians, the way our Whitstable is represented. We love the reception from people all along the way, stopping every now and then to play in the road and get people moving and grooving!

My absolute favourite piece of writing about us was by Chris Stone. "...a cascade of shifting patterns of sounds as if all the individual heartbeats of the drummers had fused into one—many legs, arms, drums, heads but only one heart whose purpose was to create rhythm for the rest of us to dance to." At our best that's exactly what we aim to be.

So look out for us at Carnival and have a bit of a jig around and hopefully put a smile on your face!

www.sambapelomar.co.uk: (contact form re joining or asking to play)
[instagram.com/sambapelomar](https://www.instagram.com/sambapelomar)
[facebook.com/SambaPeloMar](https://www.facebook.com/SambaPeloMar)

Time for something
FAR better

***Have you been looking for the
right specialist college?***

- FAR Academy is a specialist post 16 provision for young people who struggle with their social emotional and mental health. For those who have an EHCP or need support in obtaining one.
- Practical learning in a holistic and nurturing environment, a bespoke approach to each individual student with small classes.
- Our courses include the practical subjects of Art, Graphics, Photography and Business Enterprise. Plus a range of bespoke courses alongside Functional Skills Maths and English.
- Enrolling now for September 2024 Start.

**Visit www.faracademy.org for more
information or email hayley@farskate.co.uk**

FAR Academy CIC
Unit 77/78 John Wilson Business Park Whitstable
Kent CT5 3QT - 01227 779181



CELEBRATE CARNIVAL SEASON
AT THE NEPPY



OLD NEPTUNE AKA THE PUB ON THE BEACH
SERVING YOU UP FRESH FOOD DAILY, LIVE MUSIC, A GREAT SELECTION OF
BEVERIDES AND A MIGHTY FINE VIEW!

COME AND HANG OUT, MARINE TERRACE, ISLAND WALL, WHITSTABLE CT5 1EJ

Moments of Magic

— Gerry Atkinson: *carnival photographer*

GERRY has been taking photos of the carnival since 2004. We present a selection of her photographs from the last three carnivals. You can view more of her work at: gerryatkinson.com



• BELLA Bea and Mr Crow leading the carnival 2023



• BELLA Bea doing cartwheels, 2023



• CROWDS outside the Peter Cushing pub, 2023, watched over by Somerset Maugham



• Sadie Hennessy and crew, 2019



• CHRIS Stone, Belinda Murray & Jane Bowell in 2019



• CARNIVAL queens in 2023



• SAM the Giant in 2022



180 Cromwell Rd
Whitstable CT5 1NA
Open 7 days a week
07375 88 2125



Whitstable Cricket Club

The Pavilion,
Belmont Rd, Whitstable
CT5 1QJ
Phone: 01227 272226

Whitstable CC is a long established family friendly club near the centre of town.



H Walk-Ins Welcome H Good For Groups
H Good For Kids H Outdoor Seating

Regular Film Clubs, Folk Club, live music
and quizzes - please consult Whitstable
Labour Club Facebook page for details

12 Belmont Road,
Whitstable, CT5 1QP
Tel: 01227 272023



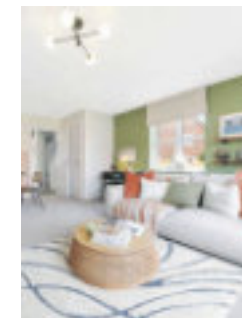
Hyde
New Homes

Whitstable Heights
Whitstable, CT5 1SH



Beautiful new homes centred around green space

2, 3 & 4 bedroom
houses available
with shared
ownership* and
outright sale



The Hyde difference. All included at no extra cost!



**GARDEN LAID
TO LAWN**



**KITCHEN
APPLIANCES**



**PRIVATE
PARKING†**



**FLOORING
THROUGHOUT**

Come and see for yourself and find out more
01227 941951 | hydenewhomes.co.uk

Hyde New Homes terms and conditions apply. *Shared ownership - Terms and conditions apply. This scheme is subject to status and fitting criteria. Minimum and maximum share values will apply and rent is payable on the unsold share. Please speak to a member of our Sales Team for more information. †Parking allocation is dependent on actual plot and subject to availability. August 2024.





Join us for this summer's exciting Summer Reading Challenge open to all primary school age children.

7 August – Birdfeeder making
1.00– 3.00 (needs booking at library)

More events will be advertised on Facebook or in the library.

Or join us at one of our regular events–

Monday 11.00 Talk Time
Tuesday 11.00 Baby Rhyme Time
Friday 11.00 Storytime
1.00– 3.00 Craft and Chat (alternate weeks)

Opening times:

Monday	9.30 – 4.30
Tuesday	9.30 – 4.30
Wednesday	9.30 – 4.30
Thursday	10.00 – 5.00
Friday	9.30 – 4.30
Saturday	10.00 – 4.00
Sunday	10.00 – 4.00



EVOLUTION HEALTH THERAPISTS

- | Audiology - Hidden Hearing
- | Bowen Technique
- | Chiropody/ Podiatry
- | Chiropractic
- | Counselling Psychology
- | Health, Fitness & Weight Loss
- | Homeopathy
- | Hypnotherapy
- | Physiotherapy
- | Reflexology
- | Therapeutic & Sport Massage



**EVOLUTION
HEALTH**

The Centre for Wellbeing
62 Borstal Hill
Whitstable
CT5 4NA

Tel: 01227 273821
www.evolutionhealth.co.uk

The Lindley Players



The Lindley Players currently have about 400 members—but we are always looking for more!

All our productions are open to the public but, if you are interested in getting more involved, annual membership is just £20 with discounts for students and the over 60s.

We need not only performers and directors but volunteers interested in helping backstage and with lighting, sound, make-up and costume, as well as bar staff, front of house and box office. Please get in touch with us during our box office hours if you are interested in hearing more or pop along to our coffee morning any Saturday from 10am-12 noon – all welcome. Or come to our annual Open Day on Saturday 14 September from 11am to 2pm.

We have a great and varied programme of productions coming up in 2024/25 including:

CONSTELLATIONS by Nick Payne – Wed 18 to Sat 21 September at 7.30pm

Marianne, a physicist, and Roland, a beekeeper, meet at a party. They hit it off and go for a drink. Or perhaps they don't. They go home together, or maybe they go their separate ways. Perhaps they're entangled in other commitments, or maybe they're destined to break each other's hearts. Prepare to be entranced by this spellbinding exploration of love's infinite potential, where every moment is a constellation of choices.

A MURDER IS ANNOUNCED by Agatha Christie – Wed 13 to Sat 16 November at 7.30pm

A most peculiar announcement in the Personal Column of the local newspaper meets with mixed reaction from the villagers. Then, at the appointed time

and place, a violent death does occur. Identities are questioned and secrets laid bare, uncovering multiple motives for a number of suspects, before Miss Marple can reveal 'whodunnit'!

A CHRISTMASCAROL: A GHOST STORY by Charles Dickens, adapted by Mark Gatiss – Thu 12 to Sat 14 December at 7.30pm (plus matinee performance on Sat 14 December at 2.30pm)

Dickens' classic story is brought to you by the talented Lindley Players Youth Group—prepare to be spooked and delighted in equal measure as you enter the supernatural Victorian world of A Christmas Carol: A Ghost Story.

CINDERELLA by Alan P Frayn – Thu 23 to Sun 26 January & Wed 29 January to Sun 2 February (Matinee performances: Sat 25 & Sun 26 January/ Sat 1 & Sun 2 February 2025)

The Whitstable pantomime is back! Perfect for audiences of all ages, Frayn's Cinderella is a spellbinding mix of music, magic, and merriment that promises to leave a lasting smile on everyone's face.

Tickets can be booked online at www.playhousewhitstable.co.uk—or pop into our friendly

Box Office between 10am and 12 noon, Tuesday to Saturdays. (Members are entitled to a £2 discount on all tickets purchased for the Lindley Players' productions.)

The Lindleys are part of the Whitstable community and, as such, we are always keen to be involved with local events and have been regular participants in the annual Whitstable Carnival for many years.

Look out for us in the procession on the 3rd of August and give us a wave!

The Coach and Horses

A nice Pub - For nice Peeps

37 Oxford St
Whitstable
CT5



DJs Every Weekend

Quiz every Tuesday

Open mic night 4th Thursday of the month

Kitchen Opening Summer




Follow us @coachandhorseswhitstable to keep up to date

Whitstable Pearl Mysteries
A major new TV series
Starring Kerry Godliman as Pearl Nolan



Read the books and watch the series now on www.acorn.tv
Acorn TV is available on Android, iOS, Apple TV, Roku, FireTV, Netgen and Amazon Prime

The Tudor Tea Rooms



Open for
Breakfast, Lunches and
Afternoon Teas
29 Harbour Street, Whitstable
www.tudortearooms.co.uk
tudortearooms@gmail.com
01227 273167

SAMPHIRE

A Kentish Bistro. Family-run since 2006. Open for brunch, lunch and dinner 7 days a week.



samphirewhitstable.co.uk [@samphire_whitstable](https://www.instagram.com/samphire_whitstable)

Seven Seas
Fish Bar & Restaurant



Opening Times
Mon-Fri 11.30-14.00 16.30-21.00
Sat 11.30 - 21.00
Sun 16.30 - 20.30



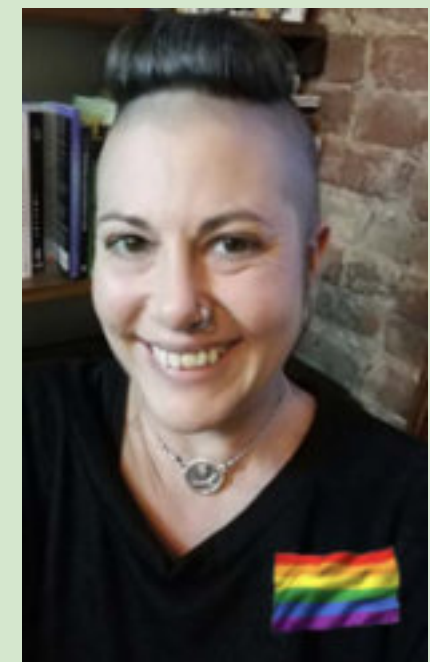
We cook fresh food to order while you wait

22-24 Canterbury Road Whitstable CT5 4EY
01227 274986

**“EMDR
is a game
changer”**

Contact:

**adrcounselling.co.uk
aureliadrocha.adr@gmail.com**





Copperfields
OF WHITSTABLE
Cookshop & Homewares Since 1956



Supporting
 **Inspiration for your kitchen and home**
OPEN 7 DAYS A WEEK • 93-95 High Street, Whitstable
01227 273519




WAREHAMS
Antique Garden Ornament Gustavian Furniture

68 Oxford Street - Whitstable CT5 1DG
Mobile : 07831 210139
www.warehams.com


  Pasco.Pascoe

Exciting new
FITNESS CLASSES in
Tankerton aimed at
encouraging people
in their 40s, 50s, 60s
– and beyond to be
more **active, fitter,**
healthier.

To book your **FREE FIRST SESSION**
- email ted@fitnessoverforty.co.uk
or visit www.fitnessoverforty.co.uk
Class prices: Pay as you go = £11.00
Buy a block of ten classes = £9.00





Join our Fitness Revolution!
Get fit, meet new people as you huff, puff and
regain your self-confidence and zest for life!



Friendly sociable sessions for all abilities
Strength, cardio and flexibility in every class
Plus healthy lifestyle and dietary advice

Contact Ted for more details:
t. 07729 054504
e. ted@fitnessoverforty.co.uk
www.fitnessoverforty.co.uk

  [fitnessoverforty](https://www.facebook.com/fitnessoverforty)

INVICTA COURIERS

*Kent's Leading Ambient & Refrigerated
Courier Service*

- | **Same Day Delivery**
- | **Next Day**
- | **Timed Deliveries**



Call us on **01227 773030** for a quote
or more information
control@invictacouriers.com
www.invictacouriers.com

Whitstable Views

Free and independent online citizens' journalism
FROM CHRIS STONE
AND JULIE WASSMER AND THE TEAM

DON'T LET THE MEDIA CONTROL YOUR VIEWS



YOUR chance to read and contribute news and views
on local, national and international issues

Over 300 articles to date about issues that affect us all
Subscribe for FREE @ www.whitstableviews.com

For Whitstable and the World!

Find us on Facebook:
@WhitstableViews

Wheeler's Oyster Bar
WHITSTABLE 1856



SEAFOOD RESTAURANT
8 High Street
Whitstable CT5 1BQ
www.wheelersoysterbar.com

WHITSTABLE HARBOUR GIN
HAVE YOU TRIED
OUR AWARD WINNING
KENTISH CHERRY & HIBISCUS
WINNER - KENT SPIRIT OF THE YEAR 2024



10% DISCOUNT IN STORE
WITH THIS ADVERT
70cl BOTTLES ONLY - VALID UNTIL 31/03/24

FIND US UPSTAIRS IN THE SOUTH QUAY SHED
WHITSTABLE HARBOUR
www.WhitstableHarbourGin.co.uk

LEN'S BARBER SHOP
01227 274245

WALK INS
WELCOME



Lens Barber Shop
86 High Street - Whitstable

SCAN HERE TO BOOK APPOINTMENTS



**WHITSTABLE
STOVE
SHOP**

is pleased to support
Whitstable Carnival.

Pop round to
2 Saddleton Road for:

BBQs (for garden or camping),
firepits, pizza ovens, locally
produced charcoal, logs.



01227 266209



Unit 17
Joseph Wilson Ind Est
Whitstable
Kent, CT5 3PS

-  Small Vans From £35 Per Day
-  Medium Vans From £45 Per Day
-  Large Vans From £50 Per Day
-  Luton Vans From £75 Per Day

 01227 772277

Located
Behind
Tesco



You are all amazing!

Our thanks go out to everyone who has played a part in the creation of this year's carnival.

The Coach & Horses

Victoria Van Hire

Simona

Hire One

Invicta Van Hire

Rob Holness and everyone who volunteered

The Marshalls

Total Pap

Sean Chandler

Matt Field

Professor Appleblossom

James Green and family

Julie Wassmer

Chris Stone

Graeme Bosley

The Roystercatchers

Dead Horse Morris

The Refried Family

Tesco

Nudie Pics

Centurion Sect

Peter Coyte

Nigel Hobbins

Christine Mackenzie

Killing Silver

Sophie Sirota

BudDub

Saturday Sun

K Larks

DJ Futurenow

PaxNindi

Rodger for his hut

Jon Flaig

Anyone who donated to the auction

All the children who participated in the poster competition

Ossie's Fish & Chips

Yogi

Matt Bate

The Labour Club for allowing us to use their space for the kid's workshops

Doze Breads for the Lammas Loaf

Tamara MacFarlane and Tales On Moon Lane

Ossie's Fish'n'Chips, Whitstable

Whitstable Junior School

Swalecliffe Community Primary School

Whitstable Carnival 2024 • Conditions of Entry.

Whilst we hope you all enjoy participating in Whitstable Carnival, certain common sense rules must be strictly adhered to for legal reasons, the smooth running of the procession and the safety and comfort of everyone involved.

Please take the time to read and consider the Conditions of Entry listed below, before taking part in the carnival.

Whitstable Carnival Association can not be held liable for any damage, injury or loss arising from any group or individual's failure to adhere to these conditions, which constitute part of your entry into this community event.

PROCESSION ASSEMBLY.

- No floats to arrive at the assembly point (or leave the dispersal point) with persons on back of vehicle.
- All vehicles must be roadworthy and legal (i.e. Taxed, MOT'd) and suitably insured for such events as this. Whitstable Carnival Association will advise. Please ensure you have copies of all relevant documentation with you.
- If generators are used, an appropriate fire extinguisher must be carried.
- An appropriate number of adults must supervise if children are involved in the entry.
- Please ensure you follow correct assembly instructions.
- Please be aware when assembling your float, of any traffic hazards.

PROCESSION.

- No items to be thrown from floats (e.g. water, powder or any substances or objects).
- Adequate spacing should be left between entries.
- Walkers must walk to the side of floats— never in front or behind floats. Please do not hang onto a moving vehicle.
- Drivers must keep control of their vehicles at all times.
- The procession will be kept moving at all times, unless advised by the Police or an official Carnival Marshal.
- No counter-marching from any band or majorette troupe is allowed.
- No jumping on or off floats while the procession is moving. Speed limit is to be kept to a walking pace. Please provide protection over the wheels, if children are to be seated with their legs hanging over the side.
- No person to travel or walk on draw bars of any tow vehicle.
- Please be aware when interacting with the crowd not to frighten the children. Some disabilities (such as autism) are not always visible.

DISPERSAL.

- Floats to stop at organised money collection points. All monies collected are the property of Whitstable Carnival Association and must be handed over to the Carnival Officials before dispersal.
- Marshals will direct all entries to the dispersal area. All persons must then alight and under no circumstances will they be permitted to travel on the floats after dispersal. This is on Police instructions.
- At this stage, normal traffic/highway rules will apply.
- Please ensure that adequate transport is at the dispersal area for your journey home.

GENERAL.

- If you have a suitably qualified First Aid trained person with your entry, could you kindly inform the office when you first arrive, ask for a 'Green Cross Card' and then display this in a prominent position in the cab of your vehicle. For non-powered entries, would you please ensure that the card is displayed in another prominent position on your entry. This card enables the marshals, officials and police quickly to identify you in the unlikely event of an incident requiring First Aid assistance.

Any person maliciously throwing any item (coins, water, missiles, etc) should be reported to an official or Police Officer, immediately. This year, we will attempt to dissuade people from throwing any coins whatsoever, but as it has been a recognised practise for a few years, *Whitstable Carnival Association* can not guarantee that there may not still be some coin throwing this year.

- All Marshals and Officials will wear green/yellow high-viz. vests, for clear recognition.
- NO ALCOHOL OR DRUGS IS PERMITTED ON ANY FLOAT EITHER BEFORE, DURING OR AFTER THE CARNIVAL PROCESSION. ANY PARTICIPANT IN THE PROCESSION, WHO IS DEEMED TO BE INTOXICATED FROM DRUGS OR ALCOHOL, WILL NOT BE PERMITTED TO TAKE PART. THE POLICE AND OUR MARSHALS HAVE THE POWER TO, AND WILL ENFORCE THIS RULE, BY DEMANDING THE IMMEDIATE WITHDRAWAL FROM THE PROCESSION AT ANY POINT, IF THIS RULE IS NOT STRICTLY ADHERED TO.
- Cups and trophies are the property of, and must be returned to, Whitstable Carnival Association. Any loss or damages shall be the responsibility of the individual signing for it.
- The Whitstable Carnival Association reserves the right to cancel or postpone the Carnival Procession and will not be held liable for any loss or damage that may arise therefrom. The Whitstable Carnival Association may, at their discretion, withdraw any entry.
- The safety of your float/entry is entirely your responsibility. Ensuring the safety of all persons within your entry, all other participants and all bystanders, must be your paramount concern when designing, constructing and processing with your float/entry. Please ensure you take all reasonable steps possible to eliminate risk and help ensure a safe, secure and enjoyable carnival for everyone.

Many thanks everyone. Let's make Whitstable Carnival 2024 a carnival to remember... for all the right reasons!



Whitstable Carnival 2024- Saturday 3rd August 2024

Procession leaves Tankerton at 5.30pm

Subject to eligibility, you may enter the following classes:-

Class A	-	Regional carnival courts
Class B	-	Motor drawn, animal drawn or powered floats
Class C	-	Wheeled carts, trollies & buggies
Class D	-	Bicycles
Class E	-	Pedestrians

At the end of the carnival, cups are awarded to the winners of the above categories B-E. Some sub-dividing of categories will be recognised within the prize giving (e.g. Trade/Public; Group/individual; Adult/child). Prize cards are awarded to all winners and runners-up. All cups must be returned to Whitstable Carnival Association by July 1st 2024.

To enter the carnival, please complete the form below and return it as soon as possible to:-

W.C.A. Montauk Lodge, 122 Milstrood Road, Whitstable, CT5 1PP

Or email to: whitcarnival@gmail.com

Late entries will be accepted on the day until 4pm

Final details will be forwarded to all entrants, nearer the date.

If you are unsure of the category of your entry, please email us for clarification.

ENTRY FORM 2024

Name of entrant: _____ Class:- _____

Title of entrant (if applicable): _____

Address: _____

_____ Phone:- _____

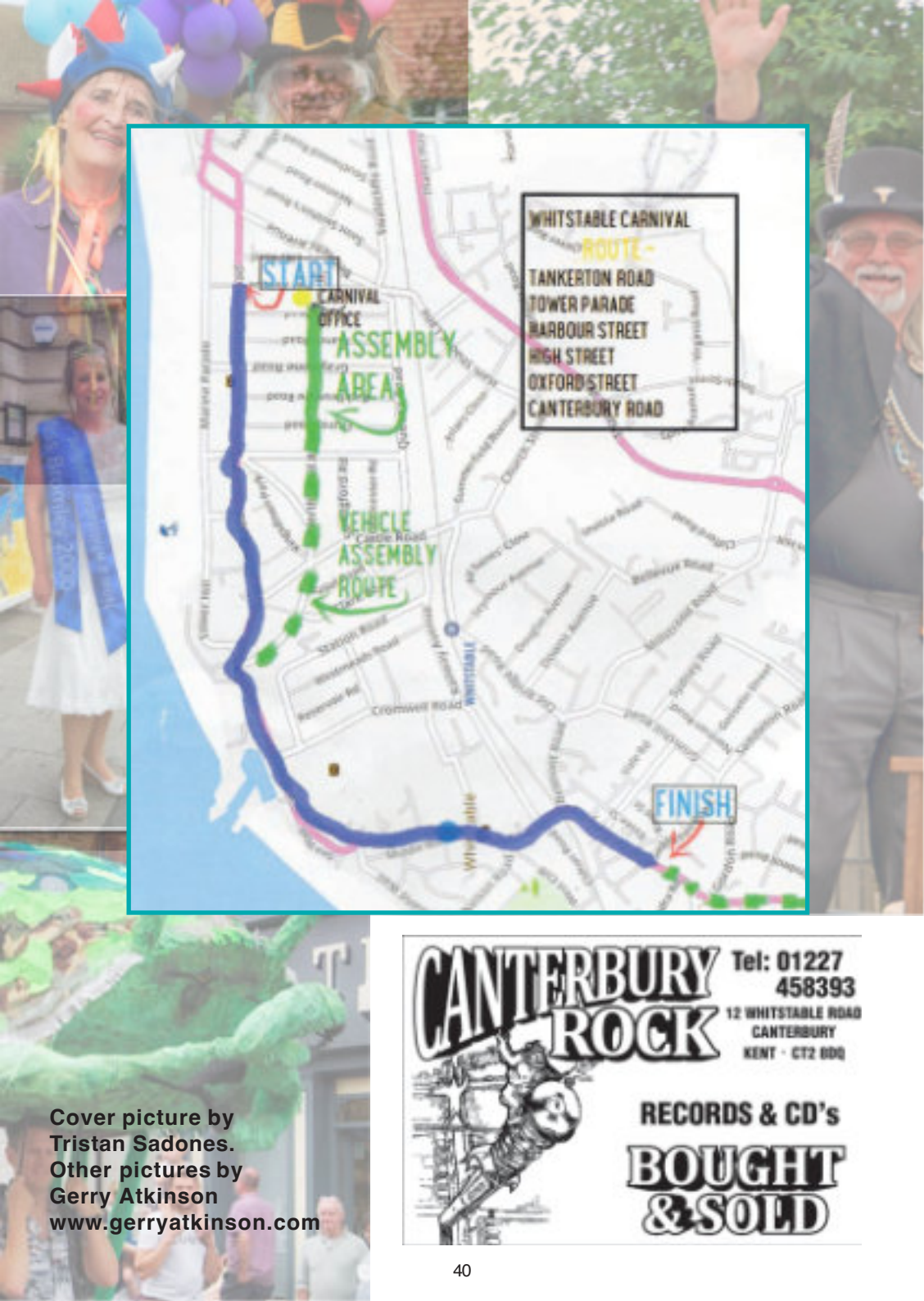
Email:- _____

Total length of vehicle _____ metres. N.B. Max height of any entry is 4.27m (14')

Short Bio of Float/charity. _____

I have read and agree to abide by the Conditions of Entry.

Signature of entrant or group representative _____ Name _____



CANTERBURY ROCK Tel: 01227 458393
12 WHITSTABLE ROAD
CANTERBURY
KENT - CT2 8DQ

RECORDS & CD's
BOUGHT & SOLD

Cover picture by
Tristan Sadones.
Other pictures by
Gerry Atkinson
www.gerryatkinson.com